



ROMBLON STATE UNIVERSITY
BIDS AND AWARDS COMMITTEE

Community Outreach Center, RSU-Main Campus, Liwanag, Odiangan, Romblon 5505
 Telephone: (042) 567-5952
 Email: bac@rsu.edu.ph
 Website: rsu.edu.ph



Management System
 ISO 9001:2015



www.tuv.com
 ID 9000018803

TECHNICAL SPECIFICATIONS

Solicitation No. RSU-2024-09-086
ABC: PhP1,158,116.98

Supply and Delivery of Office and ICT Equipment and Supplies for the Different Units and Campuses of Romblon State University

ITEM NO.	UNIT	ITEM DESCRIPTION	QTY	STATEMENT OF COMPLIANCE ¹
Accounting Office				
1	piece	Cartridge for Epson WF-C5790 (Black T9501-XL/10,000 pages)	8	
ICTS Center				
2	piece	HDP6600 Film, 760's	10	
3	piece	HDP6600 YMCK's, 750's	15	
4	box	UltraCard Noco, CR-80, 500's	15	
Human Resource Development Office				
5	unit	<p>PRINTER: EcoTank L14150 A3+ Wi-Fi Duplex Wide-Format All-in-One Ink Tank Printer Printer Type: Print, Scan, Copy, Fax with ADF Print Method: Precision Core Printhead Minimum Ink Droplet Volu3.3 pl Printer Language: ESC/P-R Print Direction: Bi-directional printing Nozzle Configuration: 400 x 1 nozzles (Black), 128 x 1 nozzles per colour (Cyan, Magenta, Yellow) Maximum Resolution: 4800 x 1200 dpi Automatic 2-sided Printing: Yes (up to A4 / Letter)</p> <p>(please see attached picture in Annex A)</p>	1	
6	unit	<p>SPLIT TYPE AIRCONDITIONER</p> <p>2hp, 230V~60Hz, 1Ph, Airflow Direction Control (Up & Down): Automatic Airflow Direction Control (Left & Right): Manual Temperature Control: With remote; 19400 (3550~20000) kj/h cooling capacity</p> <p>With Installation</p>	1	

¹ [Bidders must state here either "Comply" or "Not Comply" against each of the individual parameters of each Specification stating the corresponding performance parameter of the equipment offered. Statements of "Comply" or "Not Comply" must be supported by evidence in a Bidders Bid and cross-referenced to that evidence. Evidence shall be in the form of manufacturer's un-amended sales literature, unconditional statements of specification and compliance issued by the manufacturer, samples, independent test data etc., as appropriate. A statement that is not supported by evidence or is subsequently found to be contradicted by the evidence presented will render the Bid under evaluation liable for rejection. A statement either in the Bidder's statement of compliance or the supporting evidence that is found to be false either during Bid evaluation, post-qualification or the execution of the Contract may be regarded as fraudulent and render the Bidder or supplier liable for prosecution subject to the applicable laws and issuances.]



ROMBLON STATE UNIVERSITY

BIDS AND AWARDS COMMITTEE

Community Outreach Center, RSU-Main Campus, Liwanag, Odiangan, Romblon 5505
 Telephone: (042) 567-5952
 Email: bac@rsu.edu.ph
 Website: rsu.edu.ph



Management System
 ISO 9001:2015



www.tuv.com
 ID 9000018803

		(please see attached picture in Annex A)		
San Agustin Campus				
7	unit	GRASS CUTTER 1 SET 4 STROKE <ul style="list-style-type: none"> • Displcement (25.5 cm³) • Power Output (0.75 kW/hp) • Weight (5.5kg) • Max. RPM with Blade (11,000Nm) • Fuel Tank Capacity (0.75) • Power-to-Weight-Ratio (7.3 kg/kw) <p>(please see attached picture in Annex A)</p>	1	
8	unit	A3/A4 LAMINATOR MACHINE <ul style="list-style-type: none"> • Attr: Hot and Cold Laminator • Max Laminating Width: 230mm • Lamination Pouch Thickness: 75-125 mic • Warm-up: 3-5 mins. • Indicator: LED Power (red & green) • With ABS switch (for clearing jams) • No Blistering, automatic shutdown or overheating <p>(please see attached picture in Annex A)</p>	1	
Smart Isla				
9		TP-Link Archer A5 AC1200 Wireless Dual Band Wi-Fi Router 2.4GHz 300Mbps & 5GHz 867Mbps Router Wifi AC Wifi Router Access Point TP Link TPLink	5	
10		Extension Wheel 15 Meters	10	
11		Multipurpose Nylon Cable Ties , Self-Locking Zip Tie Cable heavy duty reusable Adjustable Durable Zip Cable Strap (per pack, 6")	10	
12		Multipurpose Nylon Cable Ties , Self-Locking Zip Tie Cable heavy duty reusable Adjustable Durable Zip Cable Strap (per pack, 8")	10	
13		Multipurpose Nylon Cable Ties , Self-Locking Zip Tie Cable heavy duty reusable Adjustable Durable Zip Cable Strap (per pack, 10")	10	
14		TP-Link TL-WN725N 150Mbps Wireless Nano USB Adapter WiFi Adapter WiFi Receiver WiFi Dongle TP LINK TPLINK	138	
Office of the Dean of Instruction				
15	piece	Water Dispenser, bottom loading (Hot, Warm, Cold) Length: 31cm, Width: 31 cm Height: 104cm, Heating: 500 W/Cooling: 85 W	1	
16	unit	Printer (all-in-one printer with capabilities for printing, scanning, copying, and faxing) Length: 37.5 cm, Height: 23.7 cm, Width: 34.7 cm	1	
FIAMO				



ROMBLON STATE UNIVERSITY
BIDS AND AWARDS COMMITTEE

Community Outreach Center, RSU-Main Campus, Liwanag, Odiangan, Romblon 5505
 Telephone: (042) 567-5952
 Email: bac@rsu.edu.ph
 Website: rsu.edu.ph



Management System
 ISO 9001:2015



www.tuv.com
 ID 9000018803

17	unit	<p>2 STROKE GRASS CUTTER</p> <p>Specifications: 2 Stroke Grass Cutter Standard Blade(mm.): 255 in diameter Rated Cutter Edge Rotation Speed: 1500rpm. Drive System:Auto Centrifugal Clutch Spiral Bevel Gear Fuel Tank Capacity: 850mL. Oil Miuxing Ratio: 25:1 (Gas / 2T Oil) Rduction Ratio: 14:19 Displacant: 40.2cc. Size (L x W x H): 1670 x 280 x 125 Engine Type: Air Cooled, 2 Stroke, Single Cylinder Rated Output Power: 1.4kW Idle Speed: 2800 - 3200rpm Carburator: Float Type, Gasoline/2 cycle Shaft Length: 160cm, Shaft Diameter: 28mm.</p>	3	
18	set	<p>PRINTER</p> <p>Multi Function w/ADF,17/9.5ipm, 2.5 Color LCD screen, pigment ink, Multi Function w/ADF,17/9.5ipm, 2.5 Color LCD screen, pigment ink</p> <p>Technical Specifications Technology: PrecisionCore Print Head Nozzle Configuration: 400 Nozzles Black, 128 Nozzles per Color Minimum Droplet Size: 3.3 pl, With Variable-Sized Droplet Technology Ink Technology: Pigment ink Printing Resolution: 4,800 x 1,200 DPI All-in-One Functions Print, Scan, Copy, Fax Print Printing Speed ISO/IEC 24734: 17 pages/min Monochrome, 9.5 pages/min Colour Printing Speed: 23 pages/min Colour (plain paper 75 g/m²), 37 pages/min Monochrome (plain paper 75 g/m²) Duplex Printing Speed ISO/IEC 24734: 7.5 A4 Pages/min Monochrome, 5 A4 Pages/min Colour Colours: Black, Cyan, Yellow, Magenta Scan: Single-sided scan speed (A4 black) 200 DPI; , 6 ipm with ADF scan 12 sec. with flatbed scan Single-sided scan speed (A4 colour) 200 DPI; , 5 ipm with ADF scan 27 sec. with flatbed scan Optical Resolution: 1 DPI x 2 DPI (Horizontal x Vertical) Optical Resolution (ADF): 1 DPI x 2 DPI (Horizontal x Vertical) Output formats: BMP, JPEG, PICT, TIFF, multi-TIFF, PDF, PNG Scanner type: Contact image sensor (CIS) Optical Resolution: 1,200 DPI x 2,400 DPI (Horizontal x Vertical) Fax Type of fax: Walk-up black and white and colour fax capability</p>	1	



ROMBLON STATE UNIVERSITY
BIDS AND AWARDS COMMITTEE

Community Outreach Center, RSU-Main Campus, Liwanag, Odiangan, Romblon 5505
 Telephone: (042) 567-5952
 Email: bac@rsu.edu.ph
 Website: rsu.edu.ph



Management System
 ISO 9001:2015



www.tuv.com
 ID 9000018803

		<p>Fax Transmission Speed: Up to 33.6kbps / Approx. 3 sec/page Error correction mode: CCITU/ITU Group3 fax with Error Correction Mode Fax speed dials (max): 100 names and numbers Page memory: Up to 180 pages (ITU-T No.1 chart) Fax Functions: PC Fax, Auto Redial, Address Book, Broadcast Fax, Fax Preview, Polling Reception Paper / Media Handling Number of paper trays: 1 Duplex: Yes tom.) Automatic Document Feed: 35 pages Output Tray Capacity: 30 Sheets Multifunction: 250 Sheets Standard Rear paper path (special media): Yes Compatible Paper Weight: 64 g/m² - 95 g/m² Media Handling: Automatic duplex (A4, plain paper) XP, XP Professional x64 Edition Interfaces: WiFi, USB, Ethernet, Wi-Fi Direct WLAN Security: WEP 64 Bit, WEP 128 Bit, WPA PSK (TKIP), WPA PSK (AES) Panel: Type: Color, Touchscreen, Diagonal: 6.1 cm Features: Touchscreen</p> <p>(please see attached picture in Annex A)</p>		
19	piece	<p>Paper Cutter Trimmer, 18 inches x 15 inches, Metal Base, Heavy Duty</p> <p>(please see attached picture in Annex A)</p>	1	
20	piece	<p>DOCUMENT SCANNER Scanning: Scanner Type: A4 sheet-fed, one-pass duplex colour scanner Sensor Type: Colour Contact Image Sensor Scanning Method: Fixed carriage and moving document Light Source: RGB LED Optical Resolution: 600 x 600 dpi Output Resolution: 50 - 1,200 dpi (1 dpi increments) Bit Depth: Each colour (RGB): 10 bit input / 8 bit output Min Document Size: 50.8 x 50.8 mm Max Document Size: 215.9 x 6096 mm Supported Paper Weight: 27 - 413 g/m² (A8 or less 127 - 413 g/m²) Output File Formats: Epson Scan 2: JPEG, TIFF, Multi-TIFF, PDF, Searchable PDF, BMP, PNG Document Capture Pro (Win): JPEG, BMP, PDF, Searchable PDF, TIFF, Multi-TIFF, PNG, DOCX, XLSX, PPTX ADF Capacity: 50 sheets (80g/m²) Daily Scan Volume: Up to 5,500 sheets / day Multi-feed Detection: Ultrasonic Sensor and Length Detection</p> <p>(please see attached picture in Annex A)</p>	1	
CET				



ROMBLON STATE UNIVERSITY
BIDS AND AWARDS COMMITTEE

Community Outreach Center, RSU-Main Campus, Liwanag, Odiangan, Romblon 5505
 Telephone: (042) 567-5952
 Email: bac@rsu.edu.ph
 Website: rsu.edu.ph



Management System
 ISO 9001:2015



www.tuv.com
 ID 9000018803

21		DK88 Speaker with Built-in Karaoke – Party Box/Guitar amp/ Fire Light.2000W, Woofer: 8"x2 + Tweeter 3"x1, with 2 units microphone, TF card reader and USB slot	1	
22		4K HDMI Wireless Display Adapter, WIFI Miracast Dangle Screen Mirroring Airplay Cast Phone to TV/Projector Receiver Support Android Mac, iOS Windows	20	
Cajidiocan Campus				
23		Water Dispenser with dish cabinet (hot and cold) 3 water options (hot, cold and Warm) Child safety lock, Temperature control with double safety thermostat, Dip tray for water waste collection Easy push button faucets, With water bottle cabinets, Stainless steel heating tank, Cold: 2L/H 120 watts, Hot 4L/H 420 watts, 230 V-60Hz, Refrigerant: R134a Product dimension (W x D x H): 31cm x 35.5c, x 106.4cm (please see attached picture in Annex A)	1	
24	set	Brother Ink, Cartridge, LC462 (M,C,Y,BK)	20	
25	piece	HDMI cable, 10 meters	5	
26	piece	HDMI cable, 5 meters	5	
OUBS				
27	unit	SCANNER Specifications: Scanning Speed 40 ppm; Document Size - Multiple Sheets - Length 50.8 mm to 355.6 mm; Colour / Monochrome Yes/Yes; Colour Depth - Input 48-bit colour processing; Resolution - Optical Up to 600 dpi × 600 dpi; Document Scanning Width / Length Up to 215.9 mm; Weight 2.64 kg; Memory Capacity 512 MB; Operation: Power Source AC: 100-240V, 50/60 Hz; Power Consumption - Ready Approx. 6.8W; Power Consumption - Power OFF Approx. 0.1W; Humidity - Operating 20% to 80%; Document Size - Multiple Sheets - Width 50.8 mm to 215.9 mm; Document Size -Single Sheet - Width 50.8 mm to 215.9 mm; 2-Sided (Duplex) Scan Yes; Colour Depth - Output 24-bit colour processing; Resolution - Interpolated Up to 1,200 dpi × 1,200 dpi; Product Dimensions (Width X Depth X Height) 299.5 mm × 190.5 mm × 215.9 mm; ADF (Automatic Document Feeder) Up to 80 pages (Paper: 80 g/m ²); 2-sided scan up to 80 images per minute; Mobile Connect App; Advanced image processing and batch scan; 80 sheet Automatic Document Feeder (ADF); Driver compatibility with TWAIN (Win, macOS), WIA, ISIS, Linux SAN; Ultrasonic Multifeed Sensor, Separation Switch	1	



ROMBLON STATE UNIVERSITY
BIDS AND AWARDS COMMITTEE

Community Outreach Center, RSU-Main Campus, Liwanag, Odiangan, Romblon 5505
 Telephone: (042) 567-5952
 Email: bac@rsu.edu.ph
 Website: rsu.edu.ph



Management System
 ISO 9001:2015



www.tuv.com
 ID 9000018803

28	unit	PORTABLE PRINTER Specifications: Print speed up to 14 ppm; Epson Connect; 1.44 Colour LCD Panel; Wi-Fi and Wi-Fi Direct connectivity; Built-in battery; High Mobility Compact and lightweight at just 1.6kg, the WF-100 fits nicely in bags and briefcases, making it easy to bring around for immediate printing needs. With a built-in battery, which is USB-chargeable	1	
29	unit	Paper Shredder Machine Specifications: Cutting style: Cross Cut; Shred Capacity: 15 (80 gsm); Security Level: P-4; Bin Capacity: 23 Litres; Shreds Staples, Paper Clip; Security level: P-4; With anti-jam technology; Working Cycle (ON/OFF): 120 min ON / 60 min OFF; Easy to operate with simple & intuitive touch controls	1	
30		Acrylic Logo; 36" diameter Logo; 6mm thick Clear Acrylic Laser Cut with digital print (Acrylic UV Printing) with wall mounted fittings provision for installation	1	
OCAO				
31	piece	Epson L6490 Maintenance Box	3	
TOTAL			302	



ROMBLON STATE UNIVERSITY BIDS AND AWARDS COMMITTEE

Community Outreach Center, RSU-Main Campus, Liwanag, Odiangan, Romblon 5505
Telephone: (042) 567-5952
Email: bac@rsu.edu.ph
Website: rsu.edu.ph



Management System
ISO 9001:2015



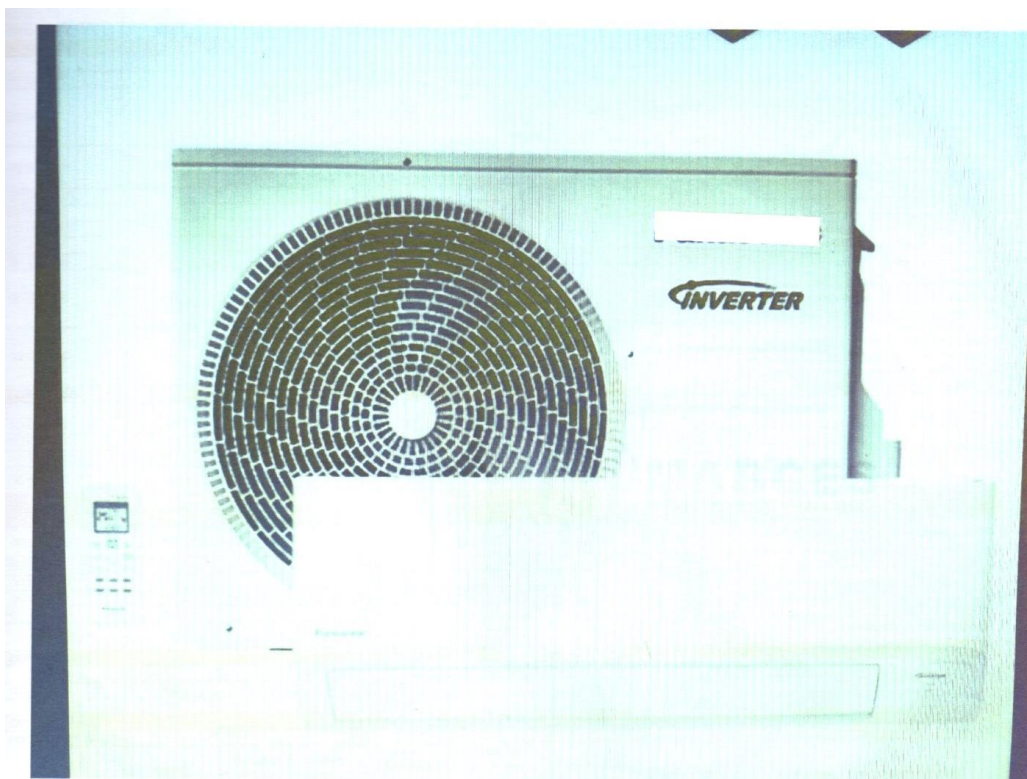
www.tuv.com
ID 9000018803

ANNEX A

Item No. 5



Item No. 6





ROMBLON STATE UNIVERSITY BIDS AND AWARDS COMMITTEE

Community Outreach Center, RSU-Main Campus, Liwanag, Odiangan, Romblon 5505
Telephone: (042) 567-5952
Email: bac@rsu.edu.ph
Website: rsu.edu.ph



Item No. 7



Item No. 8





ROMBLON STATE UNIVERSITY BIDS AND AWARDS COMMITTEE

Community Outreach Center, RSU-Main Campus, Liwanag, Odiangan, Romblon 5505
Telephone: (042) 567-5952
Email: bac@rsu.edu.ph
Website: rsu.edu.ph



Item No. 18

L6490



Item No. 19

Paper Cutter





ROMBLON STATE UNIVERSITY BIDS AND AWARDS COMMITTEE

Community Outreach Center, RSU-Main Campus, Liwanag, Odiangan, Romblon 5505
Telephone: (042) 567-5952
Email: bac@rsu.edu.ph
Website: rsu.edu.ph



Management System
ISO 9001:2015



www.tuv.com
ID 9000018803

Item No. 20

Scanner



Item No. 23

Water Dispenser with Dish Cabinet (Hot, Cold, Warm)





ROMBLON STATE UNIVERSITY BIDS AND AWARDS COMMITTEE

Community Outreach Center, RSU-Main Campus, Liwanag, Odiangan, Romblon 5505
Telephone: (042) 567-5952
Email: bac@rsu.edu.ph
Website: rsu.edu.ph



Item No. 27



Item No. 28





ROMBLON STATE UNIVERSITY BIDS AND AWARDS COMMITTEE

Community Outreach Center, RSU-Main Campus, Liwanag, Odiangan, Romblon 5505
Telephone: (042) 567-5952
Email: bac@rsu.edu.ph
Website: rsu.edu.ph



Management System
ISO 9001:2015



www.tuv.com
ID 9000018803

Item No. 29



Item No. 30





ROMBLON STATE UNIVERSITY

BIDS AND AWARDS COMMITTEE

Community Outreach Center, RSU-Main Campus, Liwanag, Odiangan, Romblon 5505
Telephone: (042) 567-5952
Email: bac@rsu.edu.ph
Website: rsu.edu.ph



Management System
ISO 9001:2015



www.tuv.com
ID 9000018803

Name and Signature of the Bidder/Authorized Representative

Name of the Company