



ROMBLON STATE UNIVERSITY
BIDS AND AWARDS COMMITTEE

Community Outreach Center, RSU-Main Campus, Liwanag, Odiangan, Romblon 5505
 Telephone: (042) 567-5952
 Email: bac@rsu.edu.ph
 Website: rsu.edu.ph



Management System
 ISO 9001:2015



www.tuv.com
 ID 9000018803

TECHNICAL SPECIFICATIONS
Solicitation No. RSU-2024-03-027
ABC: PhP871,000.00

Negotiated Procurement for Supply and Delivery of Packaging Boxes for the Marble Novelty Project of the Center of Innovative Learning and Enterprise Development (CiLearnED) of Romblon State University

ITEM NO.	UNIT	ITEM DESCRIPTION	QTY	STATEMENT OF COMPLIANCE
		Packaging Boxes for marble novelty products:		
1	pc	BOX 1 Folded size: 14"× 14" x 6" Spread size: 41.75"× 26" Material: C-flute corrugated board (CC#12 on KL/CM-C) With print (4 colors), load capacity: 2-4kg (max load if with rope or twine support) Please see Annex A for the design	2,500	
2	pc	BOX 2 Folded size: 9"× 9" × 13" Spread size: 37.75" x 30.75" Material: C-flute corrugated board (CC#12 on KL/CM-C) With print (4 colors), load capacity 2-4kg (max load if with rope or twine support) Please see Annex B for the design	3,000	
3	pc	BOX 3 Folded size: 5" x 5"× 7" Spread size: 21.25" x 23" Material: Carrier board #20 With print (4 colors), load capacity 1-2kg. Please see Annex C for the design	3,250	
		Inclusion: Some boxes to be cut at the RSU CiLearnED FabLab cardboard cutting machine. Supplier to train faculty and students on the art of cutting boxes using the equipment.		
TOTAL			8,750	

 Name and Signature of the Bidder/Authorized Representative

 Name of the Company



ROMBLON STATE UNIVERSITY BIDS AND AWARDS COMMITTEE

Community Outreach Center, RSU-Main Campus, Liwanag, Odiangan, Romblon 5505
Telephone: (042) 567-5952
Email: bac@rsu.edu.ph
Website: rsu.edu.ph

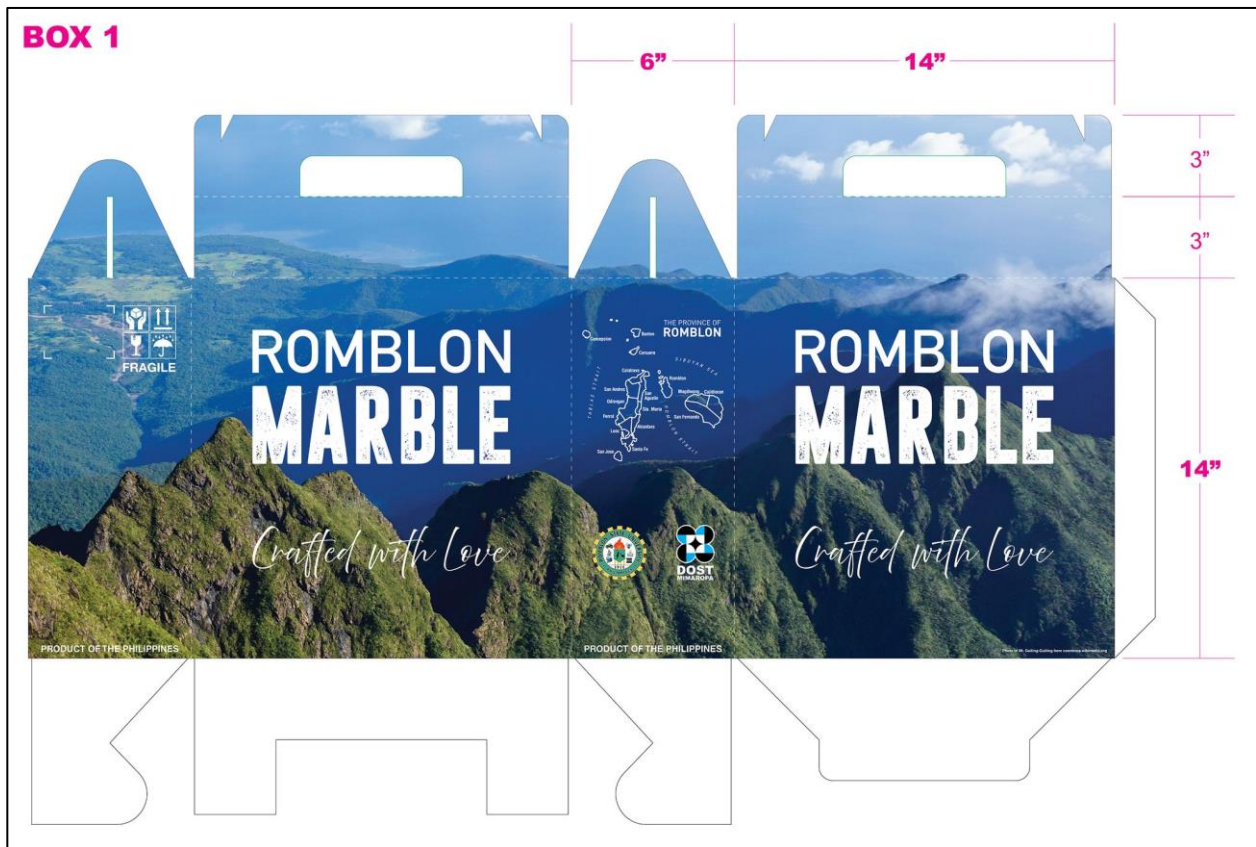


Management System
ISO 9001:2015



www.tuv.com
ID 9000018803

ANNEX A



ANNEX B





ROMBLON STATE UNIVERSITY BIDS AND AWARDS COMMITTEE

Community Outreach Center, RSU-Main Campus, Liwanag, Odiangan, Romblon 5505
Telephone: (042) 567-5952
Email: bac@rsu.edu.ph
Website: rsu.edu.ph



Management System
ISO 9001:2015



www.tuv.com
ID 9000018803

ANNEX C

