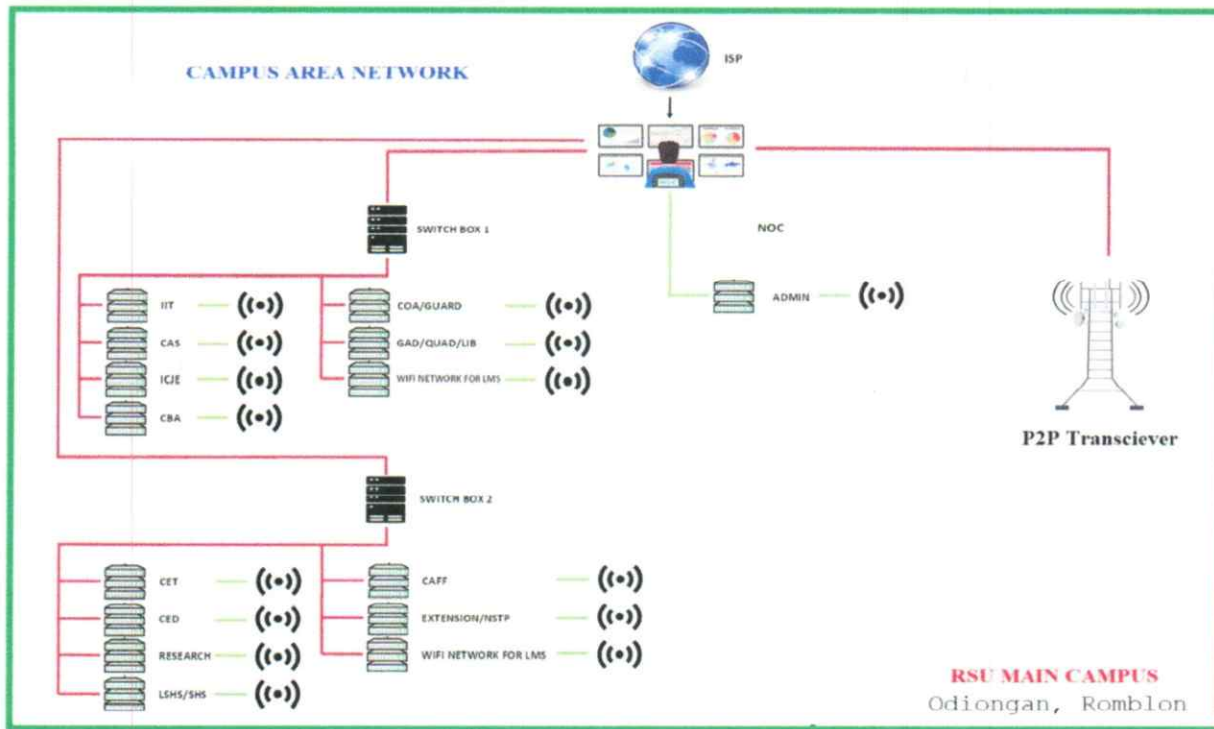
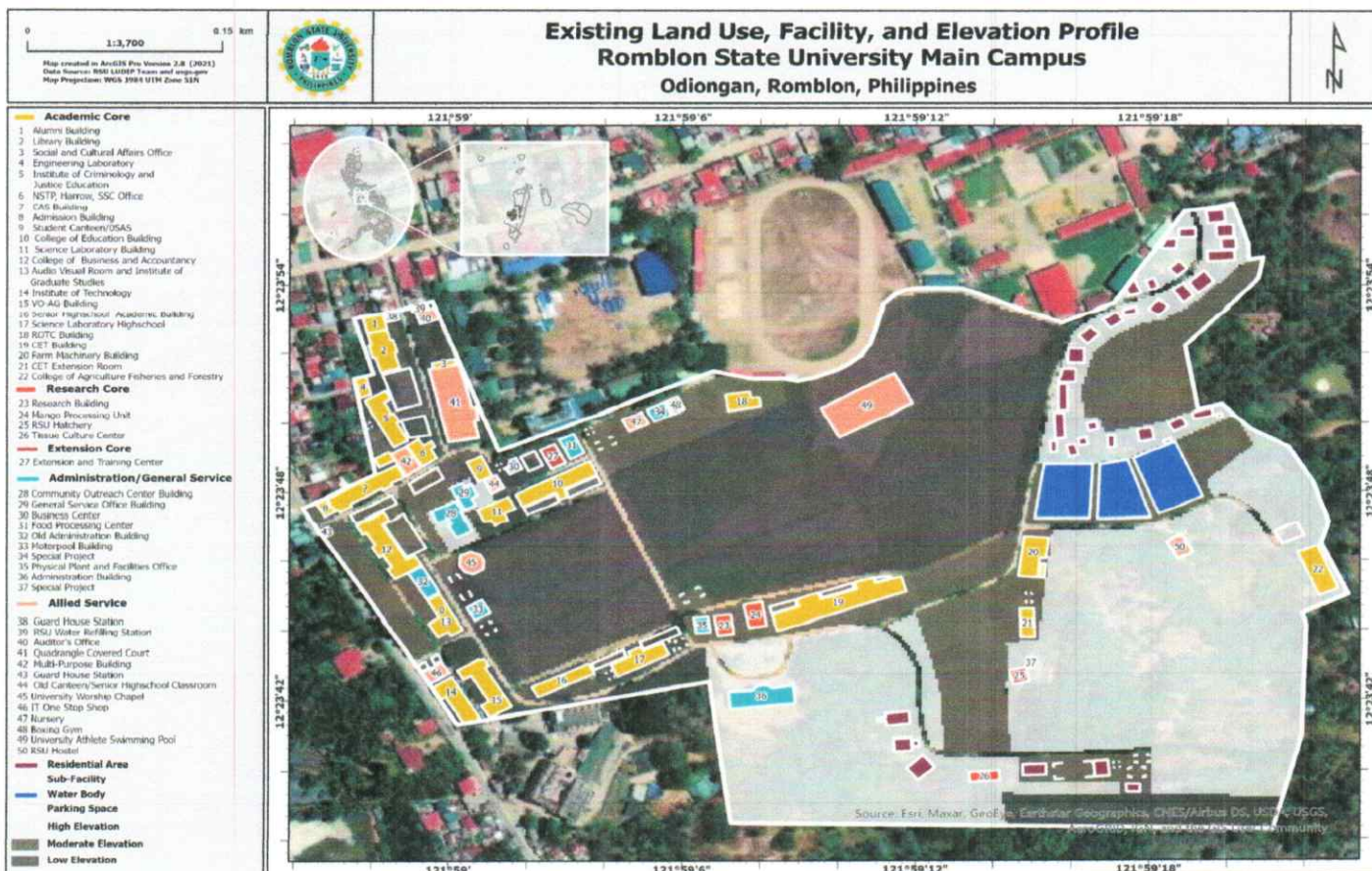


Appendix A Proposed RSU CAN



Existing Land Use and Facilities of RSU



Equipment	Number of Units	(1) Odiangan (Main Campus)	(2) Romblon Campus	(3) Sta. Fe Campus	(4) San Andres	(5) Calatrava	(6) San Agustin	(7) Sta. Maria	(8) San Fernando	(9) Cajidiocan	Relay Stations
Fiber Optic Network Equipment											
15KW Solar Power Generator for Network Backbone	1	1									
Conduits	1	1									
Media converter chassis	6	6									
Smart switch	24	16	1	1	1	1	1	1	1	1	
Fiber optic 2 core	3	3									
Learning Hub Equipment											
All in One Desktop PC	40	5		5	10	5	10	5			
UPS 650 VA	40	5		5	10	5	10	5			

ITEMS	Number of Units	Odiangan (Main Campus)	Romblon Campus	Other 7 Campuses	Relay Stations
MOOE					
Campus Network Connectivity					
Indoor Wireless AP	50	26	3	21	
Outdoor Wireless AP	40	16	3	21	
Access controller	18	10	1	7	
UPS 1100VA	24	17	1	7	
8 Port Gigabit Switch	4				4
Gigabit Router Dual Core	24	17	1	7	

Prepared by:

Approved by:

CARLWIN V. DAYAGDAG, DIT
(Project Leader)

MERIAN P. CATAJAY-MANI, Ed.D., CESE
University President

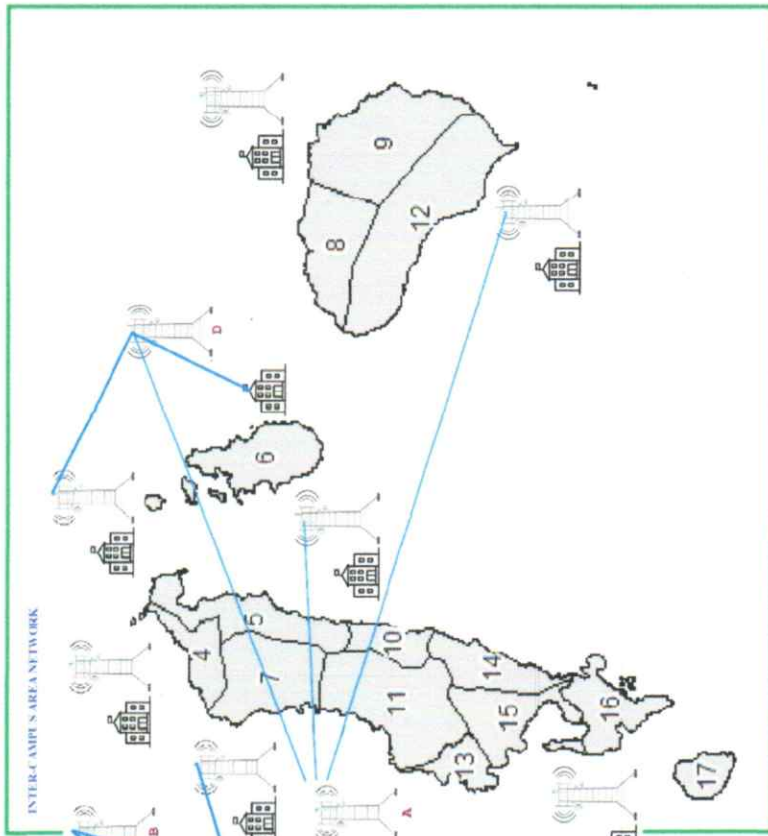
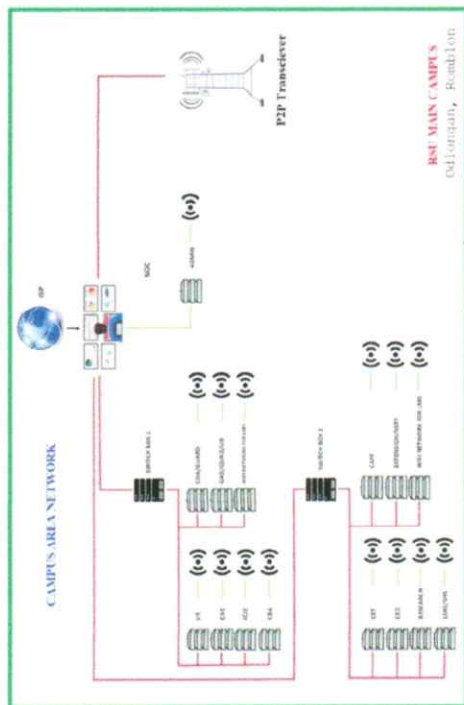
Proposed RSU Inter-CAN Design.



ROMBION STATE UNIVERSITY PROPOSED CAMPUS WIDE NETWORK

DESCRIPTION

The proposed RSU Campus Wide Network Setup will interconnect different offices in the main campus using fiber optic technology. The network will be designed to support the university's operations and provide a secure and reliable communication system. This campus interconnection allows faculty and students to access the university e-learning and other digital resources that fosters flexible learning and addresses the challenges in the new normal education setting.



LEGEND

- Switch box 1: 250m distance from NOC
- Switch box 2: 250m distance from NOC
- Fiber optic
- Cable cabinet
- Data cabinet
- Access point
- Campus P2P Transceiver

RSU CAMPUSES

- 16 Sta. Fe
- 7 San Andres
- 4 Calatrava
- 5 San Agustin
- 10 Santa Maria
- 6 Rombion
- 12 San Fernando
- 9 Cajidiocan
- 11 Odiompan

RELAY TOWERS

- A Sta. Maria Triple Peak
- B Main Relay Station (Sta. Maria)
- C RSU Appodles Relay (Calatrava)
- D RSU San Andres Relay (San Andres)



ROMBLON STATE UNIVERSITY

Liwanag, Odiongan, Romblon
 website: <http://www.rsu.edu.ph>
 email address: romblonstateu@gmail.com

**Appendix D
 TOWER DISTRIBUTION LIST**

Project Title: **SMART ISLA: Integrated SMART Campus for Learning Advancements in an Island Education Setting (Improvement of the RSU Campus-Wide Network Infrastructure)**

No	Location	Lot Owner	Network Category	Permit Acquisition Duration	Remarks
60ft Main Campus Tower					
1	RSU Main Campus	RSU	Inter-CAN	20 Days	With land title
40ft tower for campuses and relay					
2	Romblon Relay Station (*Relay)	Private (w/ MOA)	Inter-CAN	20 Days	MOA in-process; Multi-year contract; With right of way
3	RSU San Agustin Campus	RSU	Inter-CAN	20 Days	With land title
4	RSU San Fernando Campus	RSU	Inter-CAN	20 Days	With land title
5	RSU Sta. Maria Campus	RSU	Inter-CAN	20 Days	With land title
6	RSU Agpudlos (*Relay)	RSU	Inter-CAN	20 Days	With land title
7	RSU San Andres Campus	RSU	Inter-CAN	20 Days	With land title
8	San Andres Relay Station (*Relay)	RSU	Inter-CAN	20 Days	With deed of donation
9	RSU Cajidiocan Campus	RSU	CAN	20 Days	With land title
10	RSU Calatrava Campus	RSU	CAN	20 Days	With land title
11	RSU Sta. Fe Campus	RSU	CAN	20 Days	With land title
30ft Main Relay Tower tri-leg					
12	Sta. Maria Triple Peak Main (*Relay Station)	Private (w/ MOA)	Inter-CAN	20 Days	MOA in-process; Multi-year contract; With right of way

Legend:

Inter-CAN > Connected to RSU wireless Network
CAN > Wireless Campus Area Network with stand-alone LMS Server and provision for Inter-CAN

Prepared by: <u>CARLWIN V. DAYAGDAG, DIT</u> (Project Leader)	Approved by: <u>MERIAN P. CATAJAY-MANI, Ed.D., CESE</u> University President
Date:	Date: