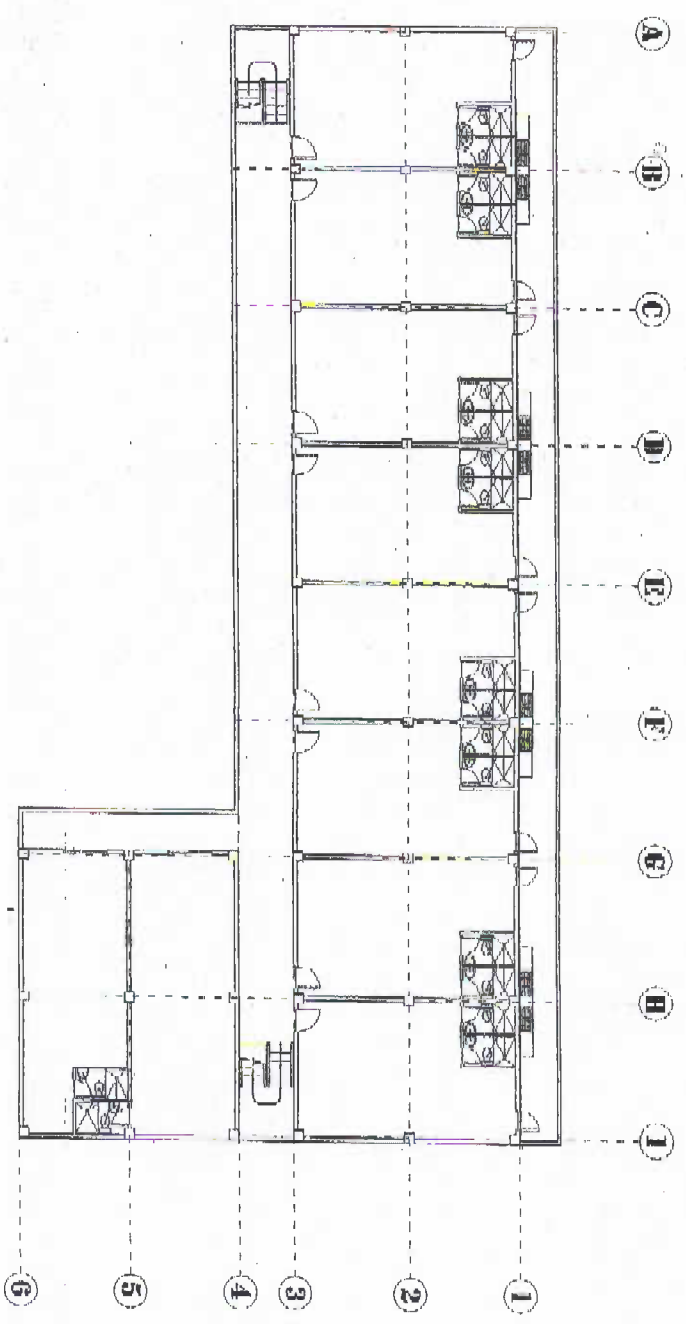


**1 GROUND FLOOR PLUMBING PLAN**  
 P-1/P-1 SCALE  
 1/2" = 1'-0"

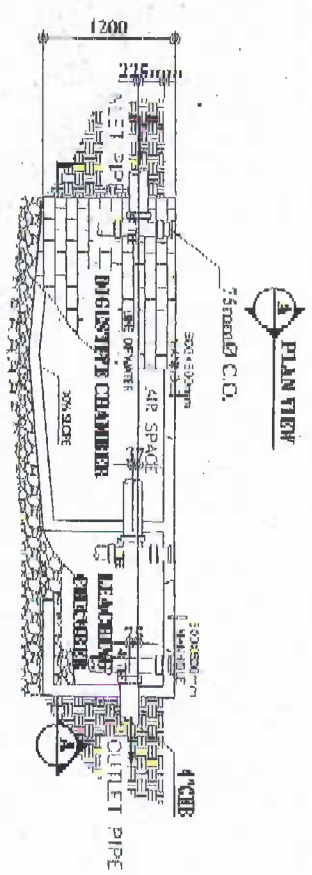
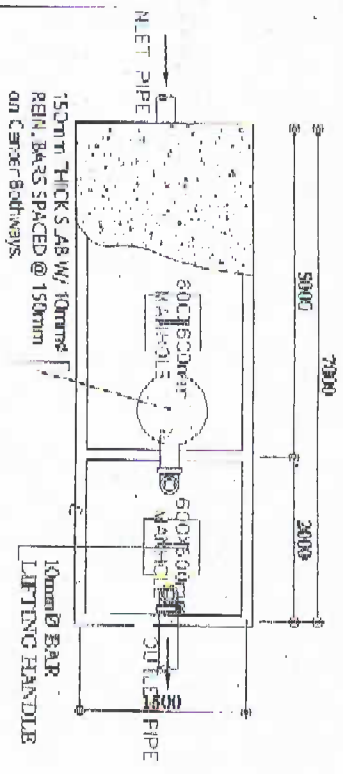
DESIGNER: <b>JOHNSON STATE UNIVERSITY</b> <b>OFFICE OF ARCHITECT, PLUMB SERVICES AND POLLUTION CONTROL UNIT</b>	DESIGNER: <b>WCH JERRY A. GONZALES</b> REGISTERED PROFESSIONAL ENGINEER REG. NO. 2284/111, 2284/112, 2284/113, 2284/114, 2284/115, 2284/116, 2284/117, 2284/118, 2284/119, 2284/120, 2284/121, 2284/122, 2284/123, 2284/124, 2284/125, 2284/126, 2284/127, 2284/128, 2284/129, 2284/130, 2284/131, 2284/132, 2284/133, 2284/134, 2284/135, 2284/136, 2284/137, 2284/138, 2284/139, 2284/140, 2284/141, 2284/142, 2284/143, 2284/144, 2284/145, 2284/146, 2284/147, 2284/148, 2284/149, 2284/150, 2284/151, 2284/152, 2284/153, 2284/154, 2284/155, 2284/156, 2284/157, 2284/158, 2284/159, 2284/160, 2284/161, 2284/162, 2284/163, 2284/164, 2284/165, 2284/166, 2284/167, 2284/168, 2284/169, 2284/170, 2284/171, 2284/172, 2284/173, 2284/174, 2284/175, 2284/176, 2284/177, 2284/178, 2284/179, 2284/180, 2284/181, 2284/182, 2284/183, 2284/184, 2284/185, 2284/186, 2284/187, 2284/188, 2284/189, 2284/190, 2284/191, 2284/192, 2284/193, 2284/194, 2284/195, 2284/196, 2284/197, 2284/198, 2284/199, 2284/200, 2284/201, 2284/202, 2284/203, 2284/204, 2284/205, 2284/206, 2284/207, 2284/208, 2284/209, 2284/210, 2284/211, 2284/212, 2284/213, 2284/214, 2284/215, 2284/216, 2284/217, 2284/218, 2284/219, 2284/220, 2284/221, 2284/222, 2284/223, 2284/224, 2284/225, 2284/226, 2284/227, 2284/228, 2284/229, 2284/230, 2284/231, 2284/232, 2284/233, 2284/234, 2284/235, 2284/236, 2284/237, 2284/238, 2284/239, 2284/240, 2284/241, 2284/242, 2284/243, 2284/244, 2284/245, 2284/246, 2284/247, 2284/248, 2284/249, 2284/250, 2284/251, 2284/252, 2284/253, 2284/254, 2284/255, 2284/256, 2284/257, 2284/258, 2284/259, 2284/260, 2284/261, 2284/262, 2284/263, 2284/264, 2284/265, 2284/266, 2284/267, 2284/268, 2284/269, 2284/270, 2284/271, 2284/272, 2284/273, 2284/274, 2284/275, 2284/276, 2284/277, 2284/278, 2284/279, 2284/280, 2284/281, 2284/282, 2284/283, 2284/284, 2284/285, 2284/286, 2284/287, 2284/288, 2284/289, 2284/290, 2284/291, 2284/292, 2284/293, 2284/294, 2284/295, 2284/296, 2284/297, 2284/298, 2284/299, 2284/300, 2284/301, 2284/302, 2284/303, 2284/304, 2284/305, 2284/306, 2284/307, 2284/308, 2284/309, 2284/310, 2284/311, 2284/312, 2284/313, 2284/314, 2284/315, 2284/316, 2284/317, 2284/318, 2284/319, 2284/320, 2284/321, 2284/322, 2284/323, 2284/324, 2284/325, 2284/326, 2284/327, 2284/328, 2284/329, 2284/330, 2284/331, 2284/332, 2284/333, 2284/334, 2284/335, 2284/336, 2284/337, 2284/338, 2284/339, 2284/340, 2284/341, 2284/342, 2284/343, 2284/344, 2284/345, 2284/346, 2284/347, 2284/348, 2284/349, 2284/350, 2284/351, 2284/352, 2284/353, 2284/354, 2284/355, 2284/356, 2284/357, 2284/358, 2284/359, 2284/360, 2284/361, 2284/362, 2284/363, 2284/364, 2284/365, 2284/366, 2284/367, 2284/368, 2284/369, 2284/370, 2284/371, 2284/372, 2284/373, 2284/374, 2284/375, 2284/376, 2284/377, 2284/378, 2284/379, 2284/380, 2284/381, 2284/382, 2284/383, 2284/384, 2284/385, 2284/386, 2284/387, 2284/388, 2284/389, 2284/390, 2284/391, 2284/392, 2284/393, 2284/394, 2284/395, 2284/396, 2284/397, 2284/398, 2284/399, 2284/400, 2284/401, 2284/402, 2284/403, 2284/404, 2284/405, 2284/406, 2284/407, 2284/408, 2284/409, 2284/410, 2284/411, 2284/412, 2284/413, 2284/414, 2284/415, 2284/416, 2284/417, 2284/418, 2284/419, 2284/420, 2284/421, 2284/422, 2284/423, 2284/424, 2284/425, 2284/426, 2284/427, 2284/428, 2284/429, 2284/430, 2284/431, 2284/432, 2284/433, 2284/434, 2284/435, 2284/436, 2284/437, 2284/438, 2284/439, 2284/440, 2284/441, 2284/442, 2284/443, 2284/444, 2284/445, 2284/446, 2284/447, 2284/448, 2284/449, 2284/450, 2284/451, 2284/452, 2284/453, 2284/454, 2284/455, 2284/456, 2284/457, 2284/458, 2284/459, 2284/460, 2284/461, 2284/462, 2284/463, 2284/464, 2284/465, 2284/466, 2284/467, 2284/468, 2284/469, 2284/470, 2284/471, 2284/472, 2284/473, 2284/474, 2284/475, 2284/476, 2284/477, 2284/478, 2284/479, 2284/480, 2284/481, 2284/482, 2284/483, 2284/484, 2284/485, 2284/486, 2284/487, 2284/488, 2284/489, 2284/490, 2284/491, 2284/492, 2284/493, 2284/494, 2284/495, 2284/496, 2284/497, 2284/498, 2284/499, 2284/500, 2284/501, 2284/502, 2284/503, 2284/504, 2284/505, 2284/506, 2284/507, 2284/508, 2284/509, 2284/510, 2284/511, 2284/512, 2284/513, 2284/514, 2284/515, 2284/516, 2284/517, 2284/518, 2284/519, 2284/520, 2284/521, 2284/522, 2284/523, 2284/524, 2284/525, 2284/526, 2284/527, 2284/528, 2284/529, 2284/530, 2284/531, 2284/532, 2284/533, 2284/534, 2284/535, 2284/536, 2284/537, 2284/538, 2284/539, 2284/540, 2284/541, 2284/542, 2284/543, 2284/544, 2284/545, 2284/546, 2284/547, 2284/548, 2284/549, 2284/550, 2284/551, 2284/552, 2284/553, 2284/554, 2284/555, 2284/556, 2284/557, 2284/558, 2284/559, 2284/560, 2284/561, 2284/562, 2284/563, 2284/564, 2284/565, 2284/566, 2284/567, 2284/568, 2284/569, 2284/570, 2284/571, 2284/572, 2284/573, 2284/574, 2284/575, 2284/576, 2284/577, 2284/578, 2284/579, 2284/580, 2284/581, 2284/582, 2284/583, 2284/584, 2284/585, 2284/586, 2284/587, 2284/588, 2284/589, 2284/590, 2284/591, 2284/592, 2284/593, 2284/594, 2284/595, 2284/596, 2284/597, 2284/598, 2284/599, 2284/600, 2284/601, 2284/602, 2284/603, 2284/604, 2284/605, 2284/606, 2284/607, 2284/608, 2284/609, 2284/610, 2284/611, 2284/612, 2284/613, 2284/614, 2284/615, 2284/616, 2284/617, 2284/618, 2284/619, 2284/620, 2284/621, 2284/622, 2284/623, 2284/624, 2284/625, 2284/626, 2284/627, 2284/628, 2284/629, 2284/630, 2284/631, 2284/632, 2284/633, 2284/634, 2284/635, 2284/636, 2284/637, 2284/638, 2284/639, 2284/640, 2284/641, 2284/642, 2284/643, 2284/644, 2284/645, 2284/646, 2284/647, 2284/648, 2284/649, 2284/650, 2284/651, 2284/652, 2284/653, 2284/654, 2284/655, 2284/656, 2284/657, 2284/658, 2284/659, 2284/660, 2284/661, 2284/662, 2284/663, 2284/664, 2284/665, 2284/666, 2284/667, 2284/668, 2284/669, 2284/670, 2284/671, 2284/672, 2284/673, 2284/674, 2284/675, 2284/676, 2284/677, 2284/678, 2284/679, 2284/680, 2284/681, 2284/682, 2284/683, 2284/684, 2284/685, 2284/686, 2284/687, 2284/688, 2284/689, 2284/690, 2284/691, 2284/692, 2284/693, 2284/694, 2284/695, 2284/696, 2284/697, 2284/698, 2284/699, 2284/700, 2284/701, 2284/702, 2284/703, 2284/704, 2284/705, 2284/706, 2284/707, 2284/708, 2284/709, 2284/710, 2284/711, 2284/712, 2284/713, 2284/714, 2284/715, 2284/716, 2284/717, 2284/718, 2284/719, 2284/720, 2284/721, 2284/722, 2284/723, 2284/724, 2284/725, 2284/726, 2284/727, 2284/728, 2284/729, 2284/730, 2284/731, 2284/732, 2284/733, 2284/734, 2284/735, 2284/736, 2284/737, 2284/738, 2284/739, 2284/740, 2284/741, 2284/742, 2284/743, 2284/744, 2284/745, 2284/746, 2284/747, 2284/748, 2284/749, 2284/750, 2284/751, 2284/752, 2284/753, 2284/754, 2284/755, 2284/756, 2284/757, 2284/758, 2284/759, 2284/760, 2284/761, 2284/762, 2284/763, 2284/764, 2284/765, 2284/766, 2284/767, 2284/768, 2284/769, 2284/770, 2284/771, 2284/772, 2284/773, 2284/774, 2284/775, 2284/776, 2284/777, 2284/778, 2284/779, 2284/780, 2284/781, 2284/782, 2284/783, 2284/784, 2284/785, 2284/786, 2284/787, 2284/788, 2284/789, 2284/790, 2284/791, 2284/792, 2284/793, 2284/794, 2284/795, 2284/796, 2284/797, 2284/798, 2284/799, 2284/800, 2284/801, 2284/802, 2284/803, 2284/804, 2284/805, 2284/806, 2284/807, 2284/808, 2284/809, 2284/810, 2284/811, 2284/812, 2284/813, 2284/814, 2284/815, 2284/816, 2284/817, 2284/818, 2284/819, 2284/820, 2284/821, 2284/822, 2284/823, 2284/824, 2284/825, 2284/826, 2284/827, 2284/828, 2284/829, 2284/830, 2284/831, 2284/832, 2284/833, 2284/834, 2284/835, 2284/836, 2284/837, 2284/838, 2284/839, 2284/840, 2284/841, 2284/842, 2284/843, 2284/844, 2284/845, 2284/846, 2284/847, 2284/848, 2284/849, 2284/850, 2284/851, 2284/852, 2284/853, 2284/854, 2284/855, 2284/856, 2284/857, 2284/858, 2284/859, 2284/860, 2284/861, 2284/862, 2284/863, 2284/864, 2284/865, 2284/866, 2284/867, 2284/868, 2284/869, 2284/870, 2284/871, 2284/872, 2284/873, 2284/874, 2284/875, 2284/876, 2284/877, 2284/878, 2284/879, 2284/880, 2284/881, 2284/882, 2284/883, 2284/884, 2284/885, 2284/886, 2284/887, 2284/888, 2284/889, 2284/890, 2284/891, 2284/892, 2284/893, 2284/894, 2284/895, 2284/896, 2284/897, 2284/898, 2284/899, 2284/900, 2284/901, 2284/902, 2284/903, 2284/904, 2284/905, 2284/906, 2284/907, 2284/908, 2284/909, 2284/910, 2284/911, 2284/912, 2284/913, 2284/914, 2284/915, 2284/916, 2284/917, 2284/918, 2284/919, 2284/920, 2284/921, 2284/922, 2284/923, 2284/924, 2284/925, 2284/926, 2284/927, 2284/928, 2284/929, 2284/930, 2284/931, 2284/932, 2284/933, 2284/934, 2284/935, 2284/936, 2284/937, 2284/938, 2284/939, 2284/940, 2284/941, 2284/942, 2284/943, 2284/944, 2284/945, 2284/946, 2284/947, 2284/948, 2284/949, 2284/950, 2284/951, 2284/952, 2284/953, 2284/954, 2284/955, 2284/956, 2284/957, 2284/958, 2284/959, 2284/960, 2284/961, 2284/962, 2284/963, 2284/964, 2284/965, 2284/966, 2284/967, 2284/968, 2284/969, 2284/970, 2284/971, 2284/972, 2284/973, 2284/974, 2284/975, 2284/976, 2284/977, 2284/978, 2284/979, 2284/980, 2284/981, 2284/982, 2284/983, 2284/984, 2284/985, 2284/986, 2284/987, 2284/988, 2284/989, 2284/990, 2284/991, 2284/992, 2284/993, 2284/994, 2284/995, 2284/996, 2284/997, 2284/998, 2284/999, 2284/1000	PROJECT NAME: <b>Construction of Student Dormitory for the College of Agriculture, Fishery &amp; Forestry</b>	DATE: <b>12/09</b>	PREPARED BY: <b>CHD OPERATOR</b> <b>Kevin J. Antoni</b>	<b>P-1</b>
LOCATION: <b>ROUNDS STATE UNIVERSITY - 600 N. 1st St., Kenosha, Wisconsin</b>	JOB NO.: <b>DATE: DEC. 2018</b>				



1 **2ND FLOOR PLUMBING PLAN**  
 P-2 P-2 SCALE  
 1/2" = 1'-0"

REVISIONS:  DESIGNER:  CHECKED BY:  DATE:	PROJECT TITLE:  55 SEUDO	SHEET NO.:  DATE:	PROJECT NO.:  DATE:
OFFICE OF AUXILIARY PLANT SERVICES AND POLLUTION CONTROL UNIT	GUYTON STATE UNIVERSITY GUYTON, NEBRASKA 315 S. GUYTON AVE. GUYTON, NE 68143-0000 TEL: (402) 792-1000 FAX: (402) 792-1000	JERRY J. GONZALES 815 S. GUYTON AVE. GUYTON, NE 68143-0000 TEL: (402) 792-1000 FAX: (402) 792-1000	COLLEGE OF AGRICULTURE, FISHERY & FORESTRY GUYTON, NEBRASKA 315 S. GUYTON AVE. GUYTON, NE 68143-0000 TEL: (402) 792-1000 FAX: (402) 792-1000

P-2



**3 PLAN OF SEPTIC VAULT**  
 SCALE: 1:50  
 P-1/P-1

- LEGEND:**
- 4" PVC TEE CONNECTION
  - 4" PVC PIPE
  - LAVATORY
  - WATER CLOSET
  - 60° PVC CONNECTION
  - SHOWER DRAIN
  - WATER LINE
  - SEPTIC LINE
  - 4" PVC WYE CONNECTION
  - FLOOR DRAIN
  - CLEAN OUT
  - SEPTIC VAULT

**PLUMBING NOTES :**

1. ALL SANITARY WORKS INCLUDED HEREIN SHALL BE EXECUTED ACCORDING TO THE PROVISIONS OF THE NATIONAL PLUMBING CODE OF THE PHILIPPINES, NATIONAL BUILDING CODE OF THE PHILIPPINES AND ITS IMPLEMENTING AND REGULATIONS.
2. COORDINATE THE DRAWING WITH THE OTHER RELATED DRAWINGS AND SPECIFICATIONS. THE ARCHITECT AND/OR THE ENGINEER SHALL BE NOTIFIED IMMEDIATELY OF ANY DISCREPANCY FOUND THEREIN. ENGINEER'S DECISION SHALL BE FINAL.
3. ALL PIPES SHALL BE INSTALLED AS INDICATED ANY RELOCATION REQUIRED FOR PROPER EXECUTION OF OTHER TRADES SHALL BE WITH PRIOR APPROVAL OF THE ARCHITECT/ENGINEER.
4. PROPOSED SANITARY UTILITIES SHALL CONFORM TO THE ACTUAL LOCATION, DEPTH AND INVERTED ELEVATION OF EXISTING PIPES AND STRUCTURES AS VERIFIED BY THE CONTRACTORS.
5. THE CONTRACTORS SHALL BE RESPONSIBLE FOR ALL REQUIRED FLOOR AND WALL OPENINGS.
6. ALL SLOPE FOR HORIZONTAL DRAINAGE SHALL MAINTAIN 1% MINIMUM UNLESS OTHERWISE NOTED.
7. SIZE OF WATER SUPPLY PIPES TO FIXTURES SHALL BE IN ACCORDANCE WITH THE MANUFACTURERS' INSTRUCTIONS.

**SPECIFICATIONS :**

1. ALL HORIZONTAL PIPINGS SHALL BE RUN IN PRACTICAL ALIGNMENT AND AT UNIFORM UNIFORM GRADE NOT LESS THAN 2% AND SHALL BE SUPPORTED OR ANCHORED AT INTERVAL NOT TO EXCEED 10FT
2. ALL PIPES PASSING THRU OR UNDER WALLS AND DRIVEWAYS SHALL BE PROPERLY PROTECTED AGAINST BREAKAGE
3. WORKSMANSHIP SHALL BE OF SUCH CHARACTER AS TO FULLY SECURE THE RESULTS SOUGHT IN ALL PROVISIONS OF THE NATIONAL PLUMBING CODE INCLUDING THE FINISHING 5 OF ALL FITTINGS, TEES, VALVES AND ACCESSORIES REQUIRED FOR PROPER PLUMBING SYSTEM.

DESIGNER: <b>ROBERTA SUE UNIVERSITY</b> OFFICE OF ASSISTANT PLANT SERVICES AND POLLUTION CONTROL UNIT	CHECKED BY: <b>ARCH. JERRY T. BONZALES</b> SECT. PLUMBING ENGINEER REG. NO. 23767 REGISTERED PROFESSIONAL ENGINEER ELECTRICAL ENGINEERING	PROJECT TITLE: <b>Construction of Student Dormitory for the          College of Agriculture, Fishery &amp;          Forestry</b>	SHEET NUMBER: <b>P-3</b>
DATE:	DRAWN BY: <b>JENNIFER</b> ASSISTANT ENGINEER	PROJECT NO.:	REVISION NO.:
DATE:	DATE:	DATE:	DATE: