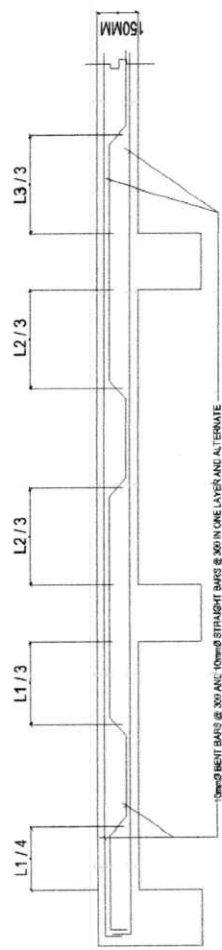


10mmØ BENT BARS @ 300 AND 10mmØ STRAIGHT BARS @ 300 IN ONE LAYER AND ALTERNATE

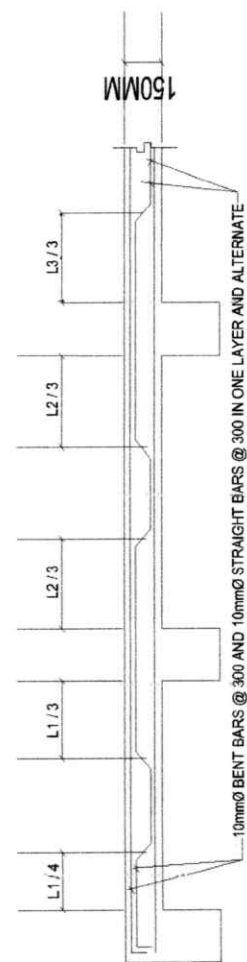
3 TYPICAL DETAIL OF SR ONE-WAY SLAB REINF. IN SHORT SPAN  
SCALE: 1/8" = 1'-0"

1 TYPICAL DETAIL OF S1 TWO-WAY SLAB EDGE SUPPORTED SLAB REINF. IN SHORT SPAN  
SCALE: 1/8" = 1'-0"



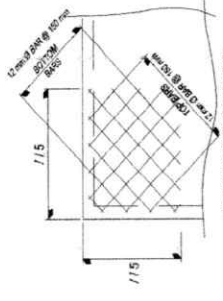
10mmØ BENT BARS @ 300 AND 10mmØ STRAIGHT BARS @ 300 IN ONE LAYER AND ALTERNATE

REHABILITATION OF MULTI-PURPOSE BUILDING I IN SAN FERNANDO CAMPUS



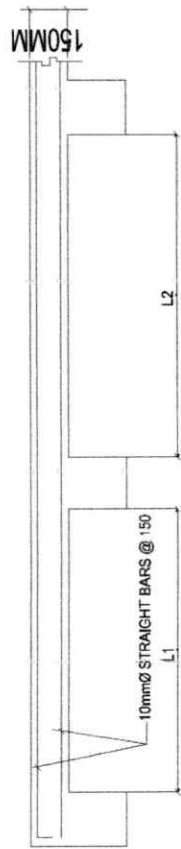
10mmØ BENT BARS @ 300 AND 10mmØ STRAIGHT BARS @ 300 IN ONE LAYER AND ALTERNATE

1 TYPICAL DETAIL OF S1 ONE-WAY SLAB REINF. IN SHORT SPAN  
SCALE: 1/8" = 1'-0"



- NOTES:
1. NO SPLICE LAPS WITHIN THE BEAM AND WITHIN A DISTANCE OF THREE TIMES THE SLAB DEPTH FROM FACE OF BEAM.
  2. NO SPLICE LAPS OF BOTTOM BARS AT MIDSPAN.
  3. SPLICE BENT TOP BARS AT ONE THIRD OF CLEAR SPAN.
  4. MINIMAL LENGTH OF SPLICE LAPS IS 300MM.
  5. SPLICE LAPS LOCATIONS SHALL BE ALTERNATE.

4 SPECIAL REINF. @ EXTERIOR CORNERS OF BEAM SUPPORTED TWO-WAY SLAB (S2)  
SCALE: 1/8" = 1'-0"



10mmØ STRAIGHT BARS @ 150  
3 TYPICAL DETAIL OF S1 ONE-WAY SLAB REINF. IN LONG SPAN  
SCALE: 1/8" = 1'-0"

STRUCTURAL ENGINEER <b>PROF. ROLANDO V. JIMENEZ</b> PRC NO. 10464-2011 PRC NO. 25653-2011 DATE ISSUED: 1-15-15	PROJECT TITLE <b>REHABILITATION OF MULTI-PURPOSE BUILDING I IN SAN FERNANDO CAMPUS</b> LOCATION: PSI, SAN FERNANDO, CAMPUS POBLACION, SAN FERNANDO, ROMBLON	RECOMMENDING APPROVAL <i>Emelia B. Ramos</i> <b>EMELIA B. RAMOS, Ph.D</b> CAMPUS DIRECTOR	APPROVED BY <i>Arnulfo de Luna</i> <b>ARNULFO DE LUNA, Ph.D</b> SUC PRESIDENT II	DRAWN BY:	SHEET CONTENT TYPICAL DETAILS OF SLAB	SHEET 22
--	---	--	---	-----------	--	-------------





