

ELECTRICAL ENGINEER
ROLANDO N. CRUZ
 PRC No. 2662
 PR No. 4921035-11
 DATE ISSUED 9/14/1992

PROJECT TITLE
REHABILITATION OF MULTI-PURPOSE BUILDING I IN SAN FERNANDO CAMPUS

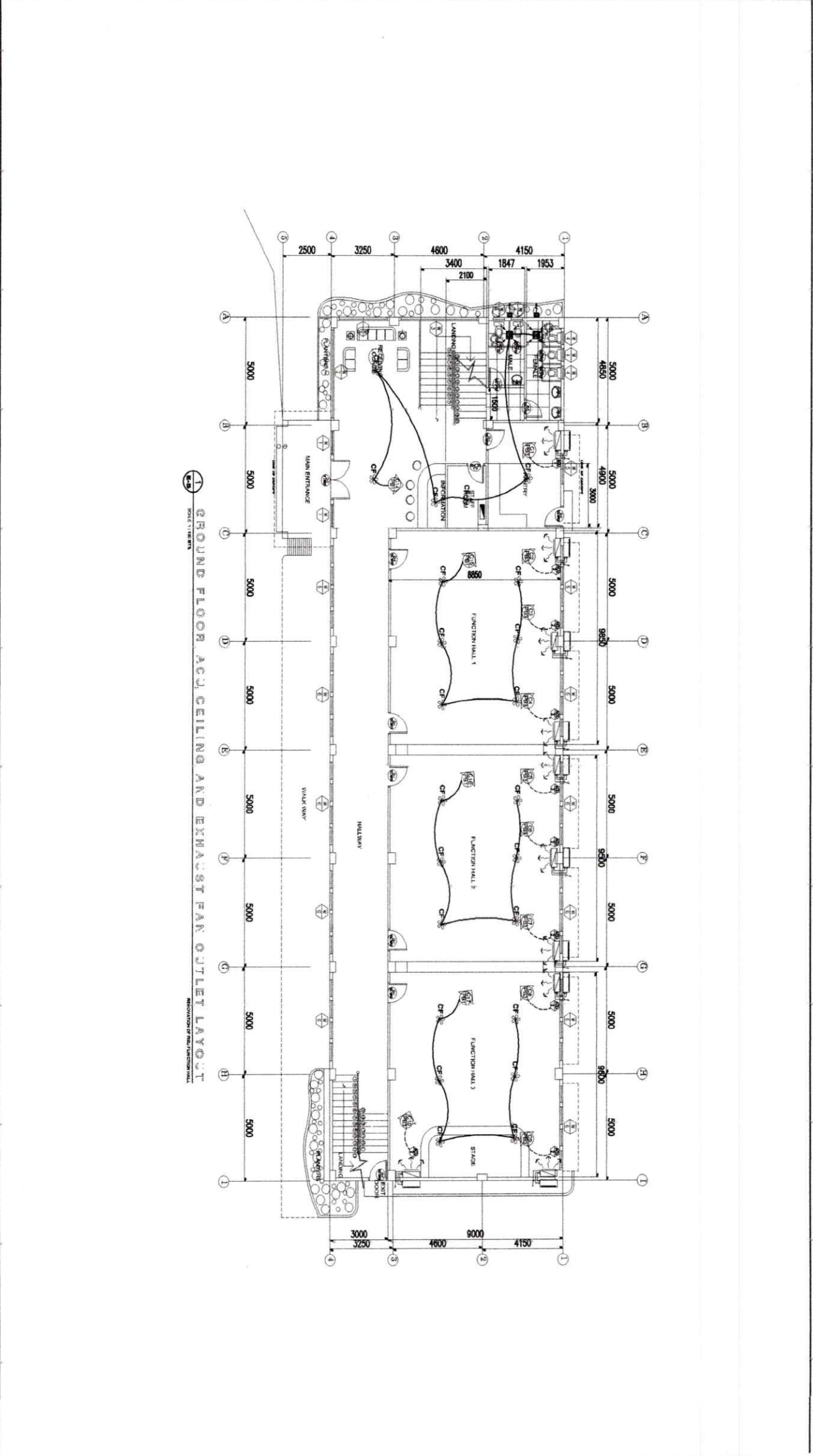
OWNER
 OWNER

RECOMMENDING APPROVAL
Emelia B. Ramos
EMELIA B. RAMOS, Ph.D
 CAMPUS DIRECTOR

APPROVED BY
Arnulfo de Luna
ARNULFO DE LUNA, Ph.D
 SUC PRESIDENT III

DRAWN BY:

SHEET CONTENT
 GROUND FLOOR ACJ. CEILING AND EXHAUST FAN OUTLET LAYOUT



E-5

36

E

ELECTRICAL ENGINEER:
ROLANDO N. CRUZ
 PRC NO: 2862
 PRM NO: 4921035
 DATE ISSUED: 8/4/1992

PROJECT TITLE:
REHABILITATION OF MULTI-PURPOSE BUILDING I IN SAN FERNANDO CAMPUS
 LOCATION: RPU SAN FERNANDO, CAMPUS FOLIAKON, SAN FERNANDO, ROMBLON

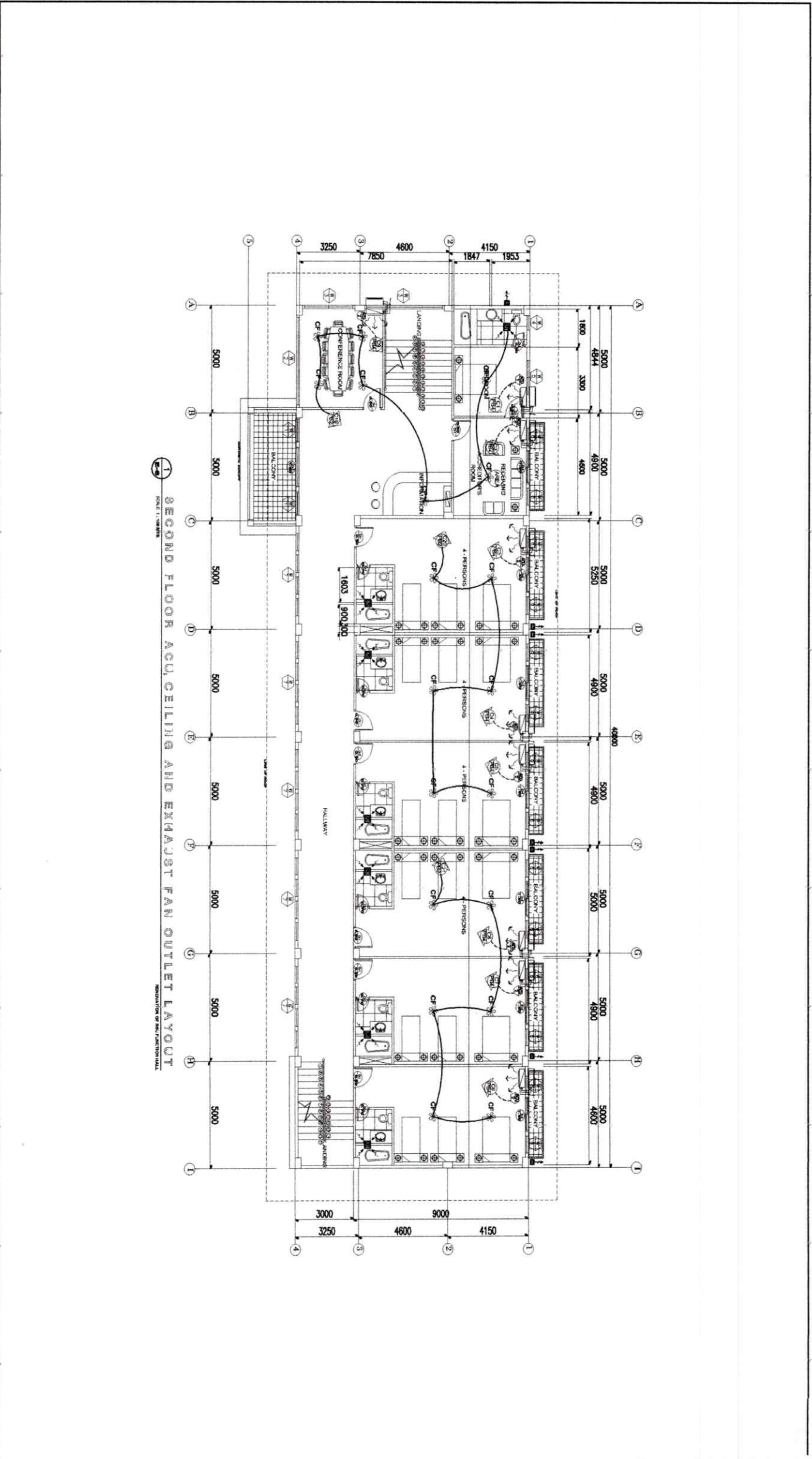
OWNER:
 (blank)

RECOMMENDING APPROVAL:
EMELIA B. RAMOS, Ph.D.
 CAMPUS DIRECTOR

APPROVED BY:
ARNULFO DE LUNA, Ph.D.
 SUD. PRESIDENT III

DRAWN BY:
 (blank)

SHEET CONTENT:
 SECOND FLOOR ACQ. CEILING AND EXHAUST OUTLET LAYOUT
37



- ELECTRIC SERVICE SHALL BE OVERHEAD, 230V, 3-PHASE, 3-WIRE, 60 CYCLES PER SECOND.
- MAIN DISCONNECT SWITCH SHALL BE 500 AT, 600 V, 65 KALC, 3P MOLDED CASE CIRCUIT BREAKER.
- SERVICE ENTRANCE CONDUCTOR SHALL BE 3 - 2 x 150 mm² THHN COPPER WIRE
- TYPE OF WIRING SHALL BE CONCEALED ON WALLS AND CEILING FOR LIGHTING AND POWER LOADS.
- INSTALLATION HEIGHT SHALL BE AS FOLLOWS:
 - A) LIGHTING SWITCHES 1.4 m ABOVE FINISHED FLOOR LINE
 - B) CONVENIENCE & AUXILIARY OUTLETS 0.3 m ABOVE FINISHED FLOOR LINE
 - C) PANELBOARDS (@ THE CENTER) 1.7 m ABOVE FINISHED FLOOR LINE
- SWITCHES AND CONVENIENCE OUTLETS SHALL BE RATED 10 AND 15 AMPERES RESPECTIVELY, 240 V, FLUSH TYPE.
- ALL MATERIALS AND EQUIPMENT TO BE USED SHALL BE BRAND NEW AND APPROVED FOR THAT PURPOSE.
- ALL ELECTRICAL CONDUCTORS TO BE USED SHALL BE STRANDED COPPER AS MANUFACTURED BY ANY APPROVED BRAND.
- EFFECTIVE GROUNDING SYSTEM SHOULD BE PROVIDED IN ACCORDANCE WITH THE PROVISIONS OF THE PHILIPPINE ELECTRICAL CODE.
- BRANCH CIRCUIT PROTECTION, CONDUCTORS, CONDUIT PIPE, ETC. SHALL BE BASED ON THE SCHEDULE OF LOADS AND SINGLE LINE DIAGRAM.
- BRANCH CIRCUIT HOME RUNS SHALL NOT BE COMBINED IN THE SAME RACEWAY AND RACEWAY FOR AUXILIARY LINES SHALL NOT CONTAIN POWER LINES.
- ALL ELECTRICAL INSTALLATION SHALL BE DONE UNDER THE DIRECT SUPERVISION OF A DULY LICENSED ELECTRICAL ENGINEER.
- ALL WORKS SHALL BE DONE IN ACCORDANCE WITH THE LATEST EDITION OF THE PHILIPPINE ELECTRICAL CODE (PEC), THE RULES AND REGULATIONS OF LOCAL AND NATIONAL AUTHORITIES CONCERNED WITH ENFORCEMENT OF RULES AND REGULATIONS OF LOCAL UTILITY COMPANY.

SPECIFICATIONS
REPRODUCTION OF THE PHILIPPINE ELECTRICAL CODE

LED LIGHT 22 W	LM	TELEPHONE OUTLET
LED 6" PH LIGHT 32 W	LC	POST LAMP
LED 4" PH LIGHT 28 W	LD	6" SPHERE LAMP
CONVENIENCE OUTLET	SE	ONE GANG SWITCH
CONVENIENCE OUTLET 300mm ABOVE FFL	SE	TWO GANG SWITCH
EMERGENCY LIGHT	SE	THREE GANG SWITCH
SPLIT TYPE AIRCON	SW	THREE-WAY SWITCH
COV CAMERA	SW	
CIRCUIT BREAKER		
PANELBOARD		

LEGEND & SYMBOLS
REPRODUCTION OF THE PHILIPPINE ELECTRICAL CODE

P81 GROUND FLOOR LIGHTING AND CONVENIENCE OUTLET PANEL BOARD

CCT	LOAD DESCRIPTION	OUTLET		CONDUCTORS, SIZE AND TYPE + EQUIPMENT	OVER CURRENT PROTECTION	
		LG	C.O		AT	FASE
1	28 W EMERGENCY LAMP	30	2	2.5 Small THHN CU WIRE	15	240 2
2	32 W EMERGENCY LAMP	30	2	2.5 Small THHN CU WIRE	15	240 2
3	32 W EMERGENCY LAMP	30	2	2.5 Small THHN CU WIRE	15	240 2
4	32 W EMERGENCY LAMP	30	2	2.5 Small THHN CU WIRE	15	240 2
5	32 W EMERGENCY LAMP	30	2	2.5 Small THHN CU WIRE	15	240 2
6	32 W EMERGENCY LAMP	30	2	2.5 Small THHN CU WIRE	15	240 2
7	32 W EMERGENCY LAMP	30	2	2.5 Small THHN CU WIRE	15	240 2
8	32 W EMERGENCY LAMP	30	2	2.5 Small THHN CU WIRE	15	240 2
9	32 W EMERGENCY LAMP	30	2	2.5 Small THHN CU WIRE	15	240 2
10	32 W EMERGENCY LAMP	30	2	2.5 Small THHN CU WIRE	15	240 2
11	32 W EMERGENCY LAMP	30	2	2.5 Small THHN CU WIRE	15	240 2
12	32 W EMERGENCY LAMP	30	2	2.5 Small THHN CU WIRE	15	240 2
13	32 W EMERGENCY LAMP	30	2	2.5 Small THHN CU WIRE	15	240 2
14	32 W EMERGENCY LAMP	30	2	2.5 Small THHN CU WIRE	15	240 2
15	32 W EMERGENCY LAMP	30	2	2.5 Small THHN CU WIRE	15	240 2
16	32 W EMERGENCY LAMP	30	2	2.5 Small THHN CU WIRE	15	240 2
17	32 W EMERGENCY LAMP	30	2	2.5 Small THHN CU WIRE	15	240 2

P82 SECOND FLOOR LIGHTING AND CONVENIENCE OUTLET PANEL BOARD

CCT	LOAD DESCRIPTION	OUTLET		CONDUCTORS, SIZE AND TYPE + EQUIPMENT	OVER CURRENT PROTECTION	
		LG	C.O		AT	FASE
1	28 W EMERGENCY LAMP	30	2	2.5 Small THHN CU WIRE	15	240 2
2	32 W EMERGENCY LAMP	30	2	2.5 Small THHN CU WIRE	15	240 2
3	32 W EMERGENCY LAMP	30	2	2.5 Small THHN CU WIRE	15	240 2
4	32 W EMERGENCY LAMP	30	2	2.5 Small THHN CU WIRE	15	240 2
5	32 W EMERGENCY LAMP	30	2	2.5 Small THHN CU WIRE	15	240 2
6	32 W EMERGENCY LAMP	30	2	2.5 Small THHN CU WIRE	15	240 2
7	32 W EMERGENCY LAMP	30	2	2.5 Small THHN CU WIRE	15	240 2
8	32 W EMERGENCY LAMP	30	2	2.5 Small THHN CU WIRE	15	240 2
9	32 W EMERGENCY LAMP	30	2	2.5 Small THHN CU WIRE	15	240 2
10	32 W EMERGENCY LAMP	30	2	2.5 Small THHN CU WIRE	15	240 2
11	32 W EMERGENCY LAMP	30	2	2.5 Small THHN CU WIRE	15	240 2
12	32 W EMERGENCY LAMP	30	2	2.5 Small THHN CU WIRE	15	240 2
13	32 W EMERGENCY LAMP	30	2	2.5 Small THHN CU WIRE	15	240 2
14	32 W EMERGENCY LAMP	30	2	2.5 Small THHN CU WIRE	15	240 2
15	32 W EMERGENCY LAMP	30	2	2.5 Small THHN CU WIRE	15	240 2
16	32 W EMERGENCY LAMP	30	2	2.5 Small THHN CU WIRE	15	240 2
17	32 W EMERGENCY LAMP	30	2	2.5 Small THHN CU WIRE	15	240 2

P83 GROUND FLOOR A.C.U. PANEL BOARD

CCT	LOAD DESCRIPTION	OUTLET		CONDUCTORS, SIZE AND TYPE + EQUIPMENT	OVER CURRENT PROTECTION	
		LG	C.O		AT	FASE
1	1,500 BTL/WH A.C.U.	1	1	2.5 Small THHN CU WIRE	80	240 2
2	2,500 BTL/WH A.C.U.	1	1	2.5 Small THHN CU WIRE	80	240 2
3	2,500 BTL/WH A.C.U.	1	1	2.5 Small THHN CU WIRE	80	240 2
4	2,500 BTL/WH A.C.U.	1	1	2.5 Small THHN CU WIRE	80	240 2
5	2,500 BTL/WH A.C.U.	1	1	2.5 Small THHN CU WIRE	80	240 2
6	2,500 BTL/WH A.C.U.	1	1	2.5 Small THHN CU WIRE	80	240 2
7	2,500 BTL/WH A.C.U.	1	1	2.5 Small THHN CU WIRE	80	240 2
8	2,500 BTL/WH A.C.U.	1	1	2.5 Small THHN CU WIRE	80	240 2
9	2,500 BTL/WH A.C.U.	1	1	2.5 Small THHN CU WIRE	80	240 2

SCHEDULE OF LOADS
REPRODUCTION OF THE PHILIPPINE ELECTRICAL CODE

P84 SECOND FLOOR A.C.U. PANEL BOARD

CCT	LOAD DESCRIPTION	OUTLET		CONDUCTORS, SIZE AND TYPE + EQUIPMENT	OVER CURRENT PROTECTION	
		LG	C.O		AT	FASE
1	1,500 BTL/WH A.C.U.	1	1	2.5 Small THHN CU WIRE	80	240 2
2	2,500 BTL/WH A.C.U.	1	1	2.5 Small THHN CU WIRE	80	240 2
3	2,500 BTL/WH A.C.U.	1	1	2.5 Small THHN CU WIRE	80	240 2
4	2,500 BTL/WH A.C.U.	1	1	2.5 Small THHN CU WIRE	80	240 2
5	2,500 BTL/WH A.C.U.	1	1	2.5 Small THHN CU WIRE	80	240 2
6	2,500 BTL/WH A.C.U.	1	1	2.5 Small THHN CU WIRE	80	240 2
7	2,500 BTL/WH A.C.U.	1	1	2.5 Small THHN CU WIRE	80	240 2
8	2,500 BTL/WH A.C.U.	1	1	2.5 Small THHN CU WIRE	80	240 2
9	2,500 BTL/WH A.C.U.	1	1	2.5 Small THHN CU WIRE	80	240 2

ELECTRICAL ENGINEER
ROLANDO N. CRUZ
PROJ. NO. 2862
DATE ISSUED 4/19/92
DATE UNIT: 9/23/2020

PROJECT TITLE:
REHABILITATION OF MULTI-PURPOSE BUILDING I IN SAN FERNANDO CAMPUS

OWNER:
EMELIA B. RAMOS, Ph.D
CAMPUS DIRECTOR

RECOMMENDING APPROVAL:
Emelia B. Ramos
EMELIA B. RAMOS, Ph.D
CAMPUS DIRECTOR

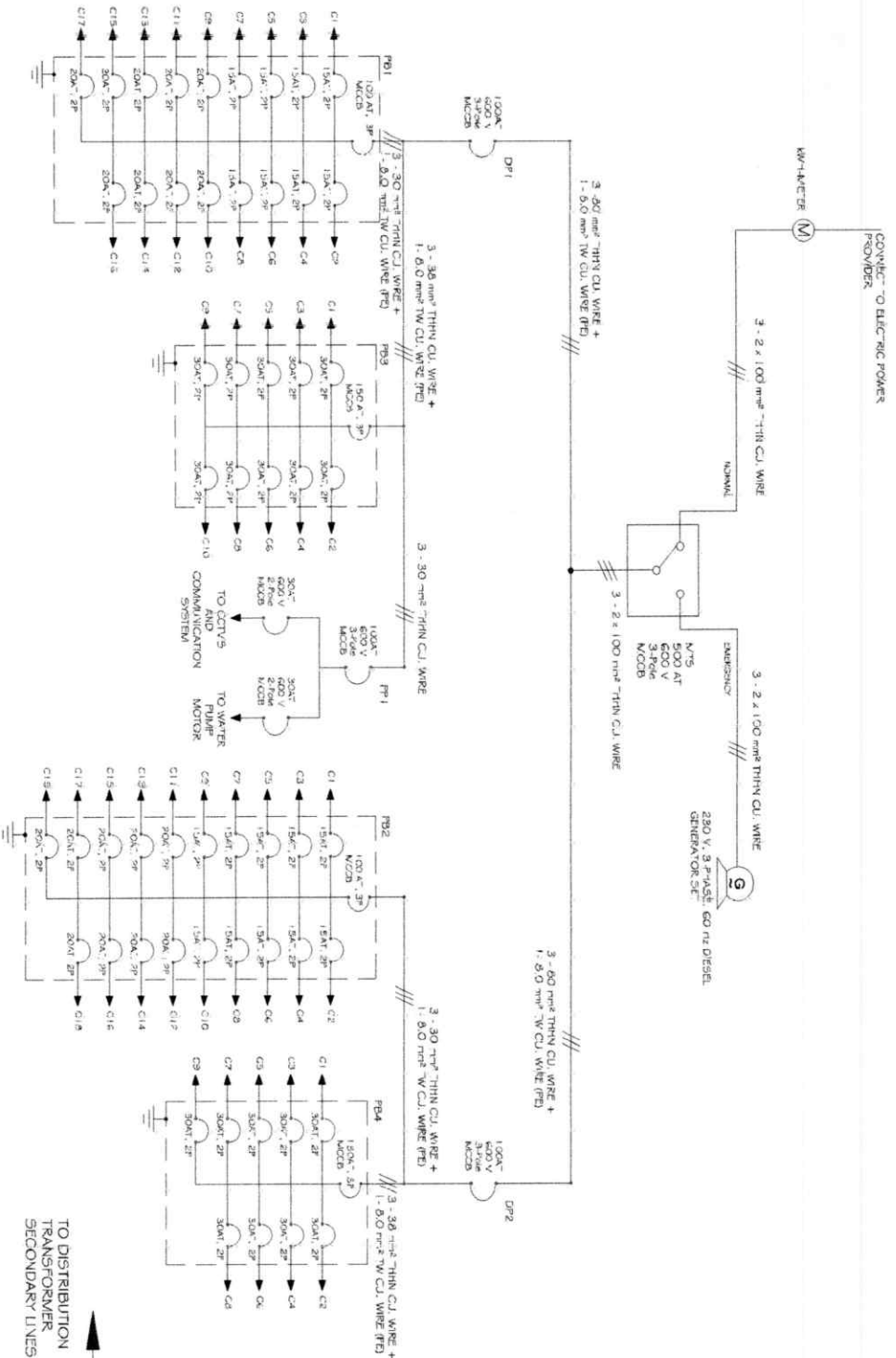
APPROVED BY:
Arnulfo de Luna
ARNULFO DE LUNA, Ph.D
SUD. PRESIDENT III

DRAWN BY:
[Signature]

SHEET CONTENT:
SPECIFICATIONS
LEGEND & SYMBOLS
SCHEDULE OF LOADS

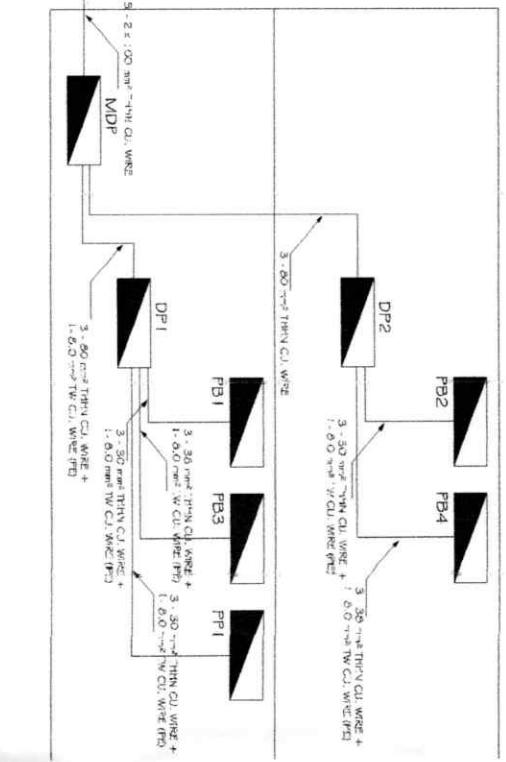
SHEET

E-2



ONE LINE DIAGRAM
REPRODUCTION OF PROJECT FUNCTION PLAN

RISER DIAGRAM
REPRODUCTION OF PROJECT FUNCTION PLAN



ELECTRICAL ENGINEER: ROLANDO N. CRUZ RUC	PROJECT TITLE: REHABILITATION OF MULTI-PURPOSE BUILDING I IN SAN FERNANDO CAMPUS	OWNER: EMELIA B. RAMOS, Ph.D	RECOMMENDING APPROVAL: ARNULFO DE LUNA, Ph.D	DRAWN BY:	SHEET CONTENT: ONE LINE DIAGRAM REHABILITACION	SHEET: 39 E
DATE ISSUED: 9/4/1992	DATE: 9/21/2003	LOCATION: SAN FERNANDO CAMPUS	APPROVED BY: ARNULFO DE LUNA, Ph.D	SUB: PRESIDENT III		

E-8