

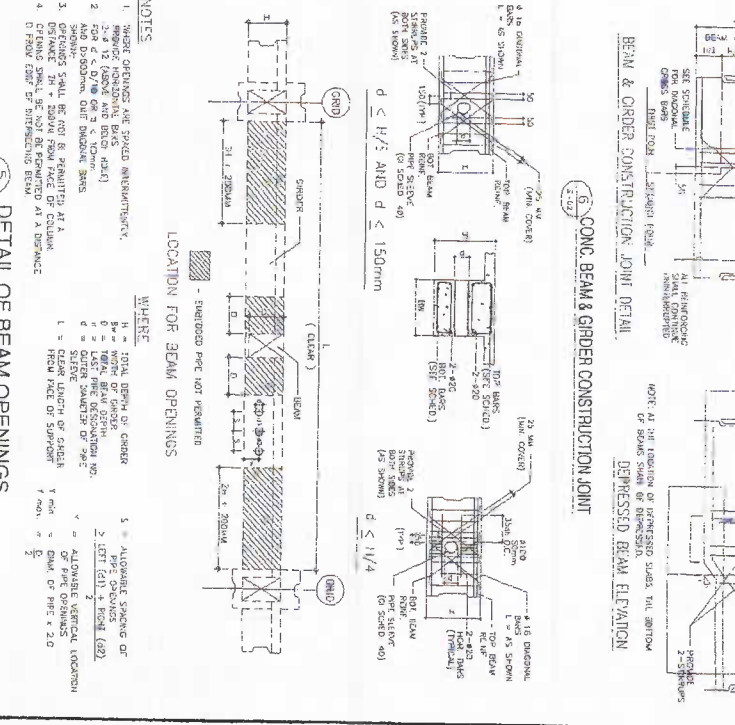
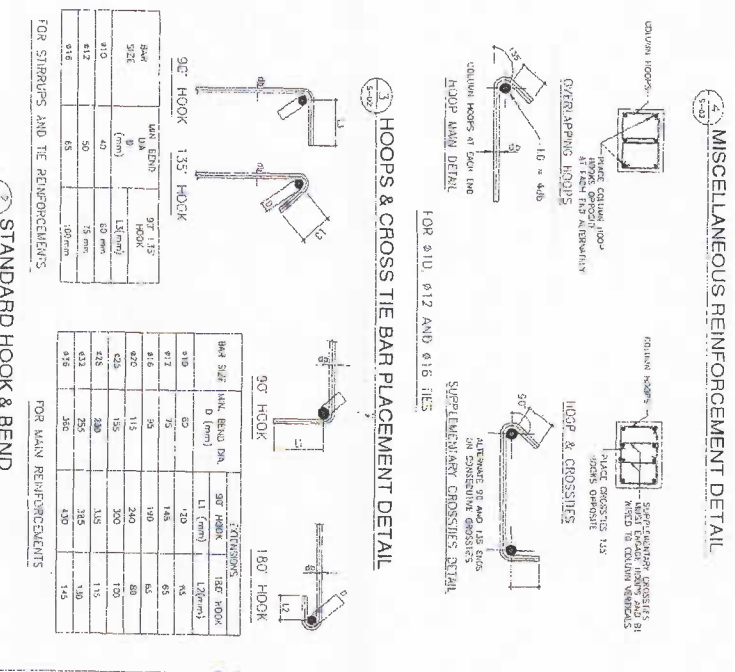
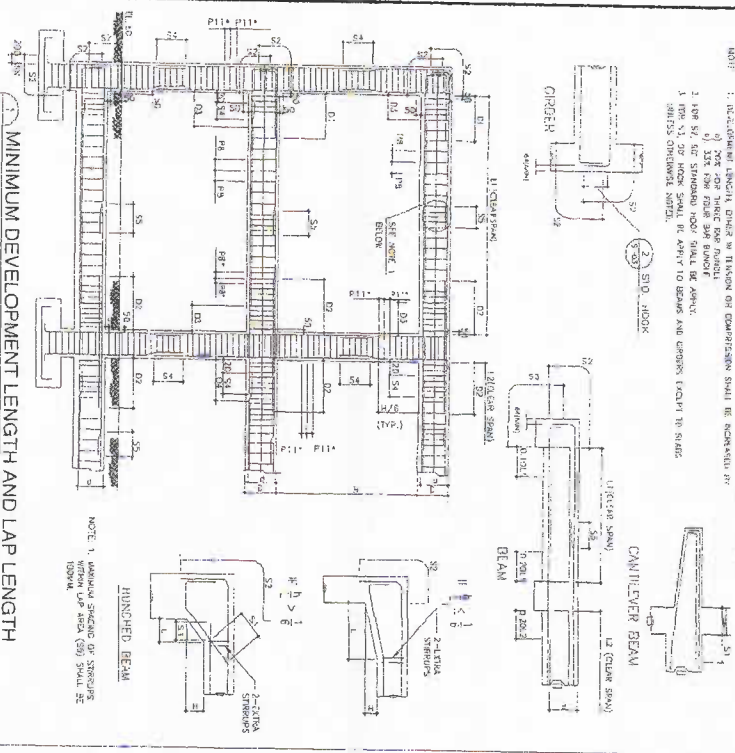
STRUCTURAL NOTES

Notes: 1. All reinforcement shall be placed in accordance with the following table. 2. All reinforcement shall be placed in accordance with the following table. 3. All reinforcement shall be placed in accordance with the following table.

Bar Size	Max. Spacing	Min. Spacing	Max. Length	Min. Length
#10	16" (400mm)	12" (300mm)	10' (3000mm)	4' (1200mm)
#12	18" (450mm)	14" (350mm)	12' (3600mm)	5' (1500mm)
#14	20" (500mm)	16" (400mm)	14' (4200mm)	6' (1800mm)
#16	22" (550mm)	18" (450mm)	16' (4800mm)	7' (2100mm)
#18	24" (600mm)	20" (500mm)	18' (5400mm)	8' (2400mm)
#20	26" (650mm)	22" (550mm)	20' (6000mm)	9' (2700mm)
#22	28" (700mm)	24" (600mm)	22' (6600mm)	10' (3000mm)
#24	30" (750mm)	26" (650mm)	24' (7200mm)	11' (3300mm)
#26	32" (800mm)	28" (700mm)	26' (7800mm)	12' (3600mm)
#28	34" (850mm)	30" (750mm)	28' (8400mm)	13' (3900mm)
#30	36" (900mm)	32" (800mm)	30' (9000mm)	14' (4200mm)

Notes: 1. All reinforcement shall be placed in accordance with the following table. 2. All reinforcement shall be placed in accordance with the following table. 3. All reinforcement shall be placed in accordance with the following table.

Bar Size	Max. Spacing	Min. Spacing	Max. Length	Min. Length
#10	16" (400mm)	12" (300mm)	10' (3000mm)	4' (1200mm)
#12	18" (450mm)	14" (350mm)	12' (3600mm)	5' (1500mm)
#14	20" (500mm)	16" (400mm)	14' (4200mm)	6' (1800mm)
#16	22" (550mm)	18" (450mm)	16' (4800mm)	7' (2100mm)
#18	24" (600mm)	20" (500mm)	18' (5400mm)	8' (2400mm)
#20	26" (650mm)	22" (550mm)	20' (6000mm)	9' (2700mm)
#22	28" (700mm)	24" (600mm)	22' (6600mm)	10' (3000mm)
#24	30" (750mm)	26" (650mm)	24' (7200mm)	11' (3300mm)
#26	32" (800mm)	28" (700mm)	26' (7800mm)	12' (3600mm)
#28	34" (850mm)	30" (750mm)	28' (8400mm)	13' (3900mm)
#30	36" (900mm)	32" (800mm)	30' (9000mm)	14' (4200mm)

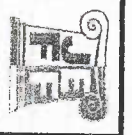


Notes: 1. All reinforcement shall be placed in accordance with the following table. 2. All reinforcement shall be placed in accordance with the following table. 3. All reinforcement shall be placed in accordance with the following table.

Bar Size	Max. Spacing	Min. Spacing	Max. Length	Min. Length
#10	16" (400mm)	12" (300mm)	10' (3000mm)	4' (1200mm)
#12	18" (450mm)	14" (350mm)	12' (3600mm)	5' (1500mm)
#14	20" (500mm)	16" (400mm)	14' (4200mm)	6' (1800mm)
#16	22" (550mm)	18" (450mm)	16' (4800mm)	7' (2100mm)
#18	24" (600mm)	20" (500mm)	18' (5400mm)	8' (2400mm)
#20	26" (650mm)	22" (550mm)	20' (6000mm)	9' (2700mm)
#22	28" (700mm)	24" (600mm)	22' (6600mm)	10' (3000mm)
#24	30" (750mm)	26" (650mm)	24' (7200mm)	11' (3300mm)
#26	32" (800mm)	28" (700mm)	26' (7800mm)	12' (3600mm)
#28	34" (850mm)	30" (750mm)	28' (8400mm)	13' (3900mm)
#30	36" (900mm)	32" (800mm)	30' (9000mm)	14' (4200mm)

Notes: 1. All reinforcement shall be placed in accordance with the following table. 2. All reinforcement shall be placed in accordance with the following table. 3. All reinforcement shall be placed in accordance with the following table.

Bar Size	Max. Spacing	Min. Spacing	Max. Length	Min. Length
#10	16" (400mm)	12" (300mm)	10' (3000mm)	4' (1200mm)
#12	18" (450mm)	14" (350mm)	12' (3600mm)	5' (1500mm)
#14	20" (500mm)	16" (400mm)	14' (4200mm)	6' (1800mm)
#16	22" (550mm)	18" (450mm)	16' (4800mm)	7' (2100mm)
#18	24" (600mm)	20" (500mm)	18' (5400mm)	8' (2400mm)
#20	26" (650mm)	22" (550mm)	20' (6000mm)	9' (2700mm)
#22	28" (700mm)	24" (600mm)	22' (6600mm)	10' (3000mm)
#24	30" (750mm)	26" (650mm)	24' (7200mm)	11' (3300mm)
#26	32" (800mm)	28" (700mm)	26' (7800mm)	12' (3600mm)
#28	34" (850mm)	30" (750mm)	28' (8400mm)	13' (3900mm)
#30	36" (900mm)	32" (800mm)	30' (9000mm)	14' (4200mm)



JEFF ARCHITECTURAL & ENGINEERING SERVICES
 REGISTERED PROFESSIONAL ENGINEERS
 1000 W. 10th Street, Suite 100
 Oklahoma City, Oklahoma 73101
 Phone: (405) 233-1234
 Fax: (405) 233-1234

ARCHITECT'S LICENSE:
 ARCHITECT: JUVENAL F. FADEROGAVA
 ENGINEER'S LICENSE:
 ENGINEER: JASODHAR P. JALUMI

PROJECT NAME:
 CONSTRUCTION OF
MULTI-PURPOSE BUILDING

UNIVERSITY
 OFFICE OF ARCHITECTURAL SERVICES AND
 POLLUTION CONTROL UNIT

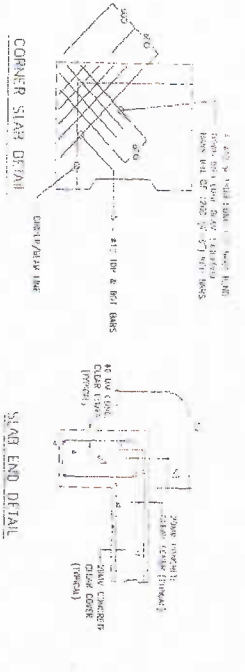
CHECKED BY:
 APPROVED BY:

SHEET COMMENTS:
 STRUCTURAL NOTES

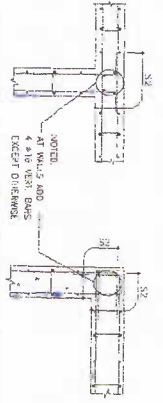
SHEET NO.:
 S-2

DATE:
 S-11

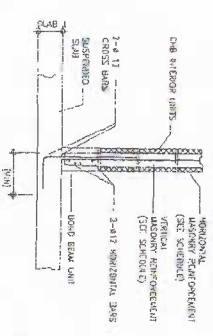
STRUCTURAL NOTES



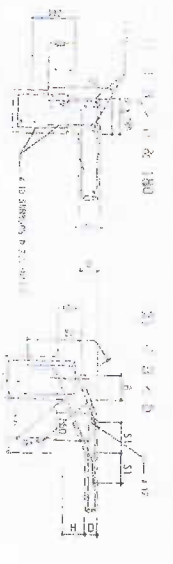
1. MISCELLANEOUS DETAILS



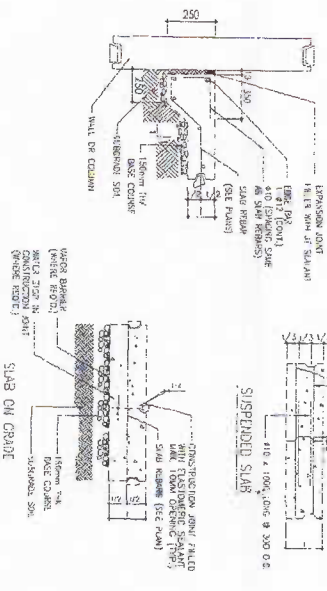
2. REBARS @ CORNERS OF R.C. WALLS



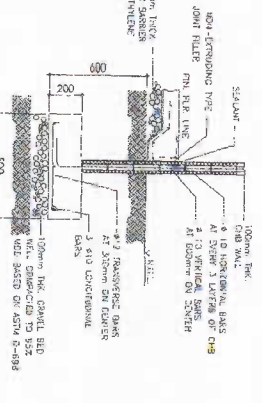
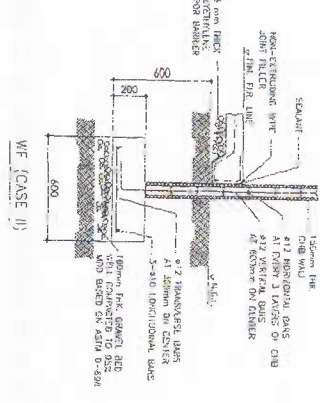
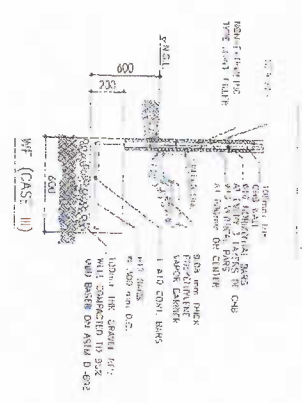
3. CHB CONNECTION DETAILS



4. MISCELLANEOUS SLAB DETAILS



5. CHB WALL FOOTING DETAILS (WHERE APPLICABLE)



JEFF ARCHITECTURAL & ENGINEERING SERVICES
 1000 N. 10th St., Suite 100, Phoenix, AZ 85004
 Phone: (602) 254-1111
 Fax: (602) 254-1112
 Website: www.jeff-engineering.com

ARCHITECT'S LICENSE:
 JUVY F. FADROGAYA
 P.E.C. NO. 00112171 P.E. NO. 8897180
 DATE: 01-20-11 EXPIRES: 01-20-14

ENGINEER'S LICENSE:
 JASOD F. FALCINI
 P.E.C. NO. 014701 P.E. NO. 8093440
 DATE: 12-24-18 EXPIRES: 01-20-21

PROJECT TITLE:
 CONSTRUCTION OF
 MULTI-PURPOSE BUILDING
 UNIVERSITY
 PHOENIX, ARIZONA

CHECKED BY:
 JEROME ADALTO FALCINI
 125955 - 75008

APPROVED BY:
 JEROME ADALTO FALCINI
 125955 - 75008

SHEET CONTENTS:
 STRUCTURAL NOTES

SHEET NO.:
 S-3
 S-11