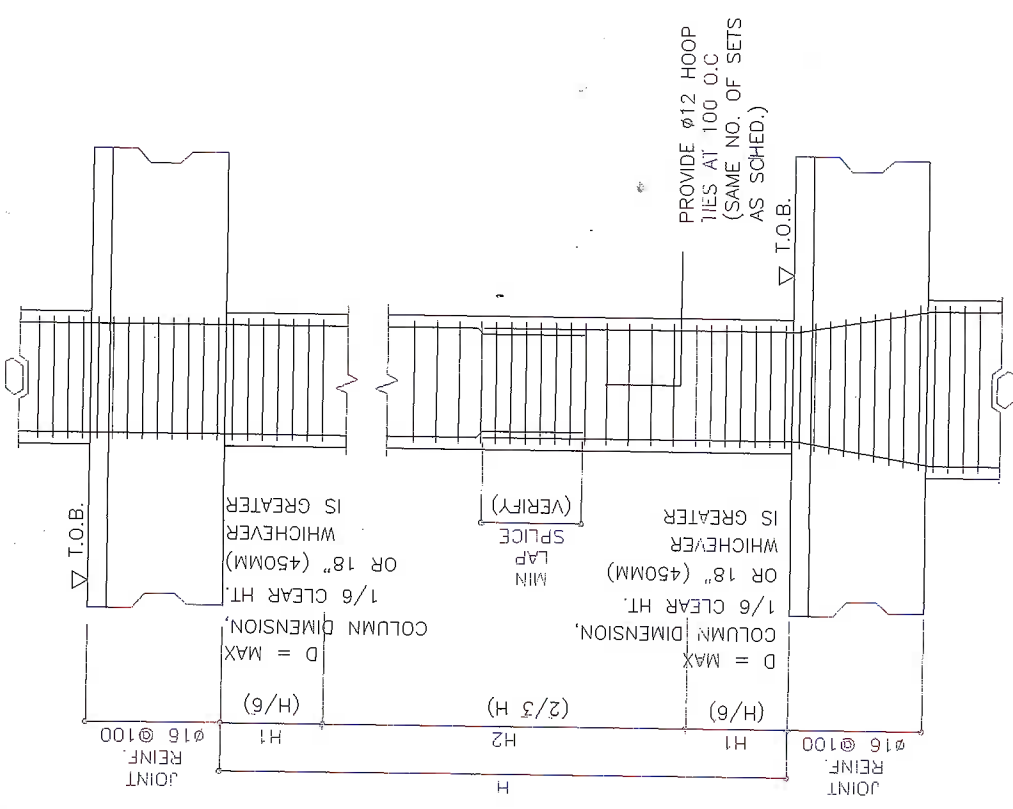


**R.C. COLUMN / PEDESTAL SCHEDULE**

MARK	C-1	C-2
FOUNDATION TO ROOF LEVEL		
DIMENSION (B x D)	400X400	400X400
VERTICAL BARS	8-Ø20 2-Ø12	4-Ø20 & 4-16Ø 1-Ø10
TIES	2-Ø12	1-Ø10
SPACING	1Ø 50, 10@100 REST@150	1Ø 50, 10@100 REST@200



**TYP. COLUMN ELEVATION**

PREPARED BY: ROMBLON STATE UNIVERSITY  
 OFFICE OF AUXILIARY, PLANT SERVICES AND POLLUTION CONTROL UNIT

CHECKED BY: JEROME M. SALAS  
 APPROVED BY: JEROME M. SALAS

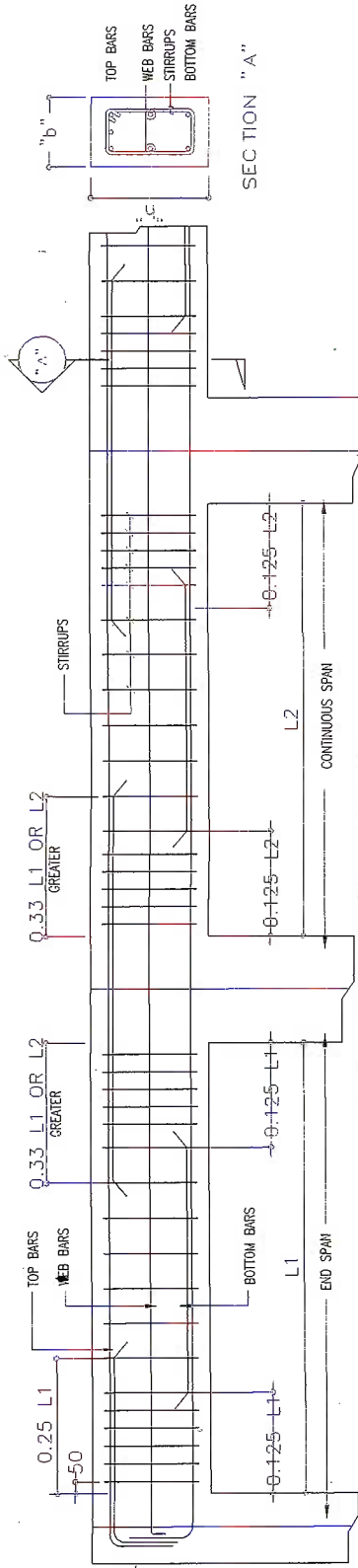
CIVIL ENGINEER: JEROME M. SALAS  
 PRC REG. NO.: 013592

PROJECT TITLE: CONSTRUCTION OF EXTENSION AND TRAINING CENTER  
 LOCATION: ROMBLON STATE UNIVERSITY - Main Campus, Iwahig, Odiongan, Romblon

SHEET CONTENT: AS SHOWN

PREPARED BY: CAD OPERATOR: NERVENA M. ROTONI  
 JOB NO.:  
 DATE: JUNE 2017

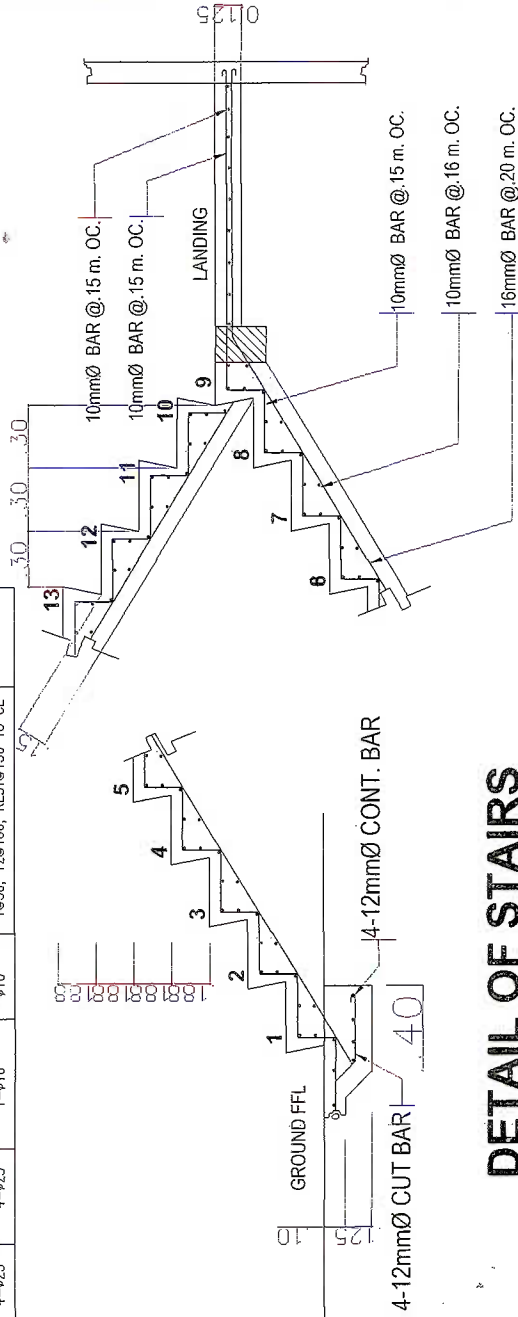
S-10



TYPICAL GIRDER / BEAM ELEVATION  
SCALE: N.T.S.

**R. C. GIRDER/BEAM SCHEDULE**

MARK	SIZE (mm)	REINFORCEMENTS						REMARKS
		LEFT SUPPORT		MID-SPAN		RIGHT SUPPORT		
		TOP	BOTTOM	TOP	BOTTOM	TOP	BOTTOM	
FB-1	250X400	4-Ø25(2L)	4-Ø20	4-Ø25(2L)	4-Ø20	4-Ø25(2L)	4-Ø20	1-Ø16 STIRRUPS TYPES Ø SPACING 1050, 1100, REST@150 TO CL
FB-2	250X400	4-Ø20	4-Ø20	4-Ø20	4-Ø20	4-Ø20	4-Ø20	1-Ø16 1050, 1000, REST@220 TO CL
RB-1	250X400	4-Ø20	4-Ø20	4-Ø20	4-Ø20	4-Ø20	4-Ø20	1-Ø16 1050, 1100, REST@150 TO CL
FTB	300X450	4-Ø25	4-Ø25	4-Ø25	4-Ø25	4-Ø25	4-Ø25	1-Ø16 1050, 1200, REST@150 TO CL



**DETAIL OF STAIRS**

PREPARED BY: <b>ROMBLON STATE UNIVERSITY</b> OFFICE OF AUXILIARY, PLANT SERVICES AND POLLUTION CONTROL UNIT	CIVIL ENGINEER: JSDROR R. SALMINGO PTR REG. NO.: 013529 Validity: Date: 1-27-17 Place: SAN JOSE, ROMBLON TIN: 446-312-742-000	CHECKED BY: JEROME ANJOLO P. EVARITO APPROVED BY: ALBERTO DE LUENA IS - President	PROJECT TITLE: <b>CONSTRUCTION OF          EXTENSION AND TRAINING CENTER</b> LOCATION: ROMBLON STATE UNIVERSITY - Main Campus, Lirioang, Odiongan, Romblon	SHEET CONTENT: <b>AS SHOWN</b>	PREPARED BY: CAD OPERATOR: Newel M. Rotoni JOB NO.: DATE: JUNE 2017	
	ROMBLON STATE UNIVERSITY OFFICE OF AUXILIARY, PLANT SERVICES AND POLLUTION CONTROL UNIT					