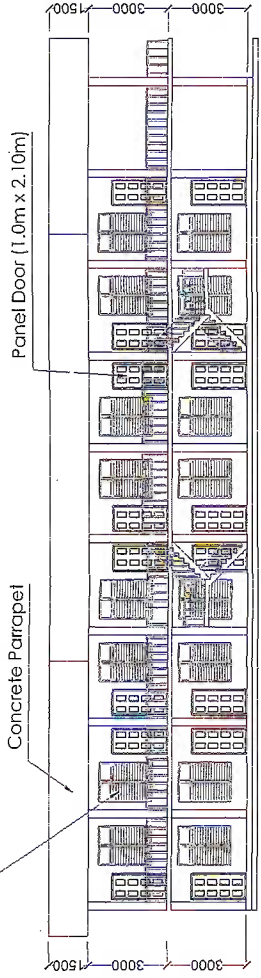
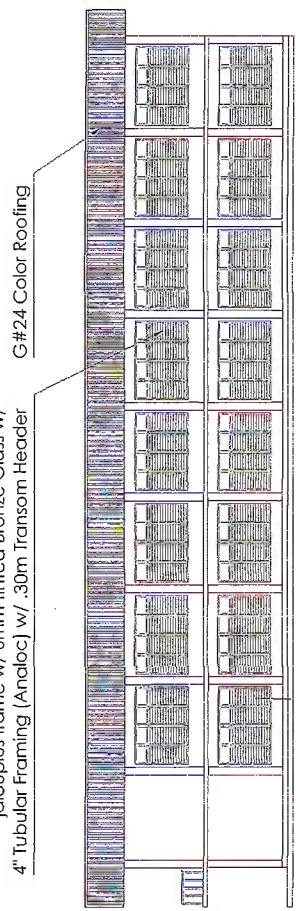


1.5x 2.0m w/ .75m width/section(max. width) jalousie frame w/ 6mm tinted Bronze Glass w/ 4" Tubular Framing (Anoloc) w/ .30m Transom Header



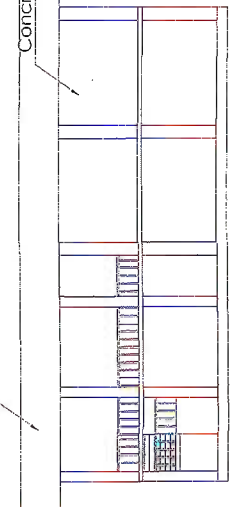
1 FRONT ELEVATION
SCALE 1:200

3.0x 2.0m w/ .50m width/section(max. width) jalousie frame w/ 6mm tinted Bronze Glass w/ 4" Tubular Framing (Anoloc) w/ .30m Transom Header



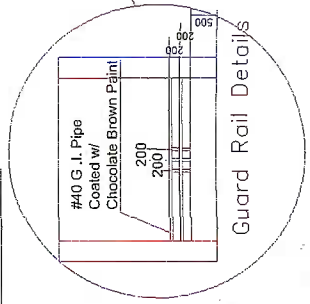
2 REAR ELEVATION
SCALE 1:200

Concrete Parapet



3 RIGHT SIDE ELEVATION
SCALE 1:200

Concrete Painted Finished



4 LEFT SIDE ELEVATION
SCALE 1:200

PREPARED BY: ROMBLON STATE UNIVERSITY OFFICE OF AUXILIARY, PLANT SERVICES AND POLLUTION CONTROL UNIT	CIVIL ENGINEER ISIDRO R. SALMINGO	CHECKED BY: FERONE ADORACION PAJARKITO Architect	PROJECT TITLE: CONSTRUCTION OF 2 - STOREY ACADEMIC BUILDING FOR THE COLLEGE OF ENGINEERING AND TECHNOLOGY (CET)	SHEET CONTENT: AS SHOWN	PREPARED BY: CAD OPERATOR: Newel M. Abioni JOB NO.: DATE: JULY 2016	
	PTR No. : 1795904 Date : 1-27-17 Place: SAN JOSE, ROMBLON TIN: 446-312-742-000	APPROVED BY: ARSENIO JOSE LUNA Architect	LOCATION: ROMBLON STATE UNIVERSITY - Main Campus, Kawasag, Odianpan, Romblon			