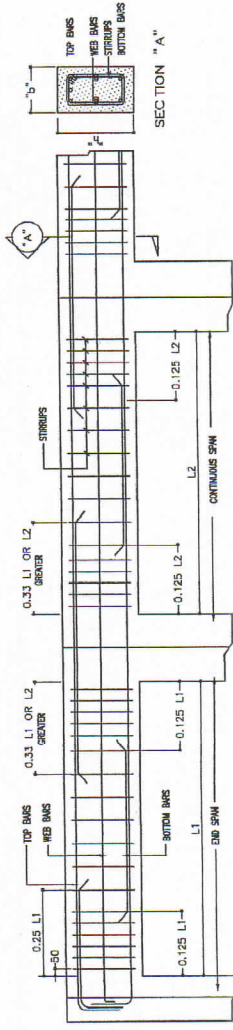


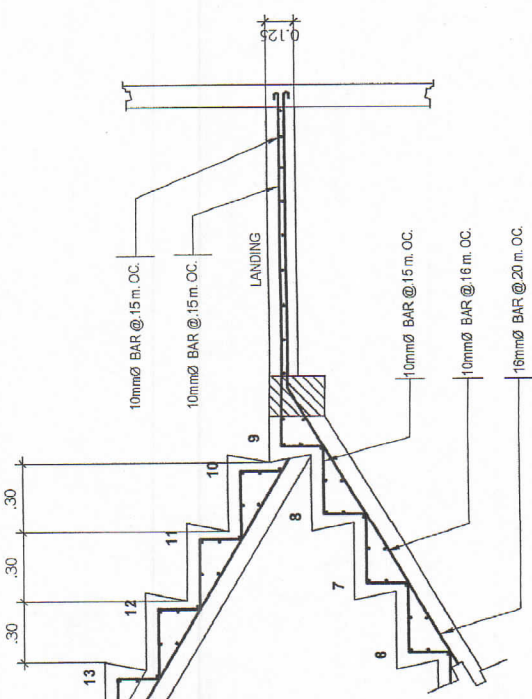
TYP. COLUMN ELEVATION



TYPICAL GIRDER / BEAM ELEVATION N.T.S.

R. C. GIRDER/BEAM SCHEDULE

MARK	SIZE (mm)	REINFORCEMENTS				STIRRUPS TYPES	REMARKS
		LEFT SUPPORT	MID-SPAN	RIGHT SUPPORT	WEB BARS EACH FACE		
G-1	350X500	TOP 5-#25(2L) BOTTOM 4-#25(2L)	TOP 5-#25(2L) BOTTOM 6-#25(2L)	TOP 5-#25(2L) BOTTOM 4-#20	2-#16	1950, 1#100, REST@200 TO CL	CANTILEVER
FB-2	250X400	TOP 4-#20 BOTTOM 4-#20	TOP 4-#20 BOTTOM 4-#20	TOP 4-#20 BOTTOM 4-#20	1-#16	1950, 1#100, REST@150 TO CL	
RB-1	250X400	TOP 4-#20 BOTTOM 4-#20	TOP 4-#20 BOTTOM 4-#20	TOP 4-#20 BOTTOM 4-#20	1-#16	1950, 1#100, REST@150 TO CL	
FTB	300X450	TOP 4-#25 BOTTOM 4-#25	TOP 4-#25 BOTTOM 4-#25	TOP 4-#25 BOTTOM 4-#25	1-#16	1950, 2#100, REST@150 TO CL	

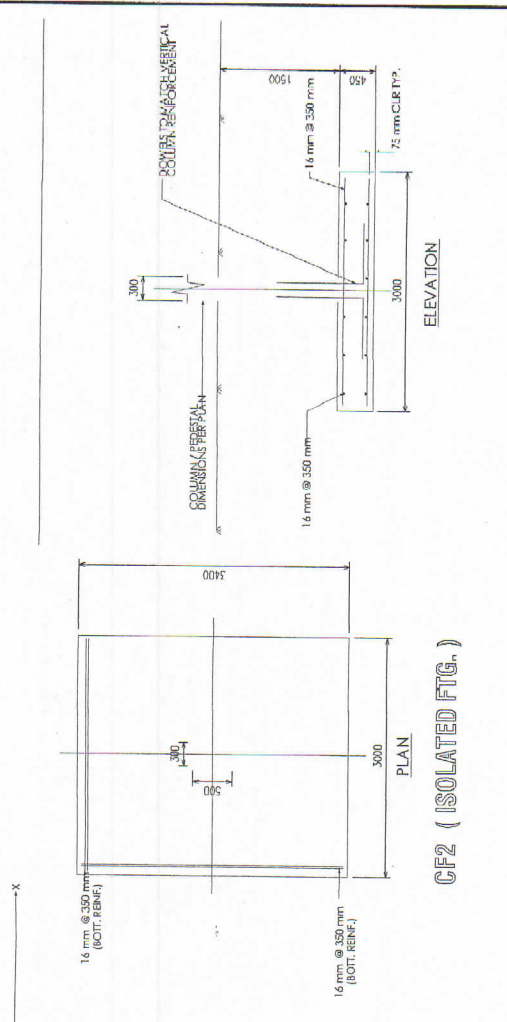


DET. OF STAIR ON GRADE SCALE 1:20m.

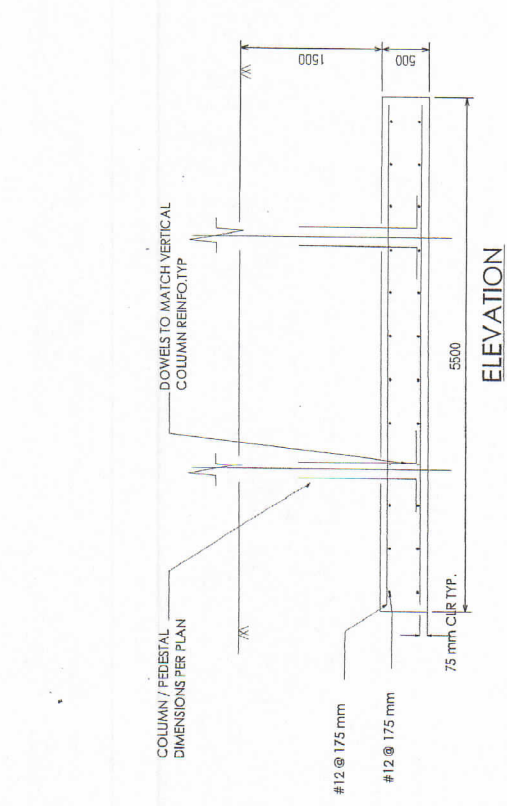
R. C. COLUMN / PEDESTAL SCHEDULE

MARK	FOUNDATION TO ROOF LEVEL	PC-1
DIMENSION (B x D)	300X500	200X400
VERTICAL BARS	6-#25 / 4-#20	4-#20
TIES	2-#12	1-#10
SPACING	1@ 50, 10@100 REST@150	1@ 50, 10@100 REST@200

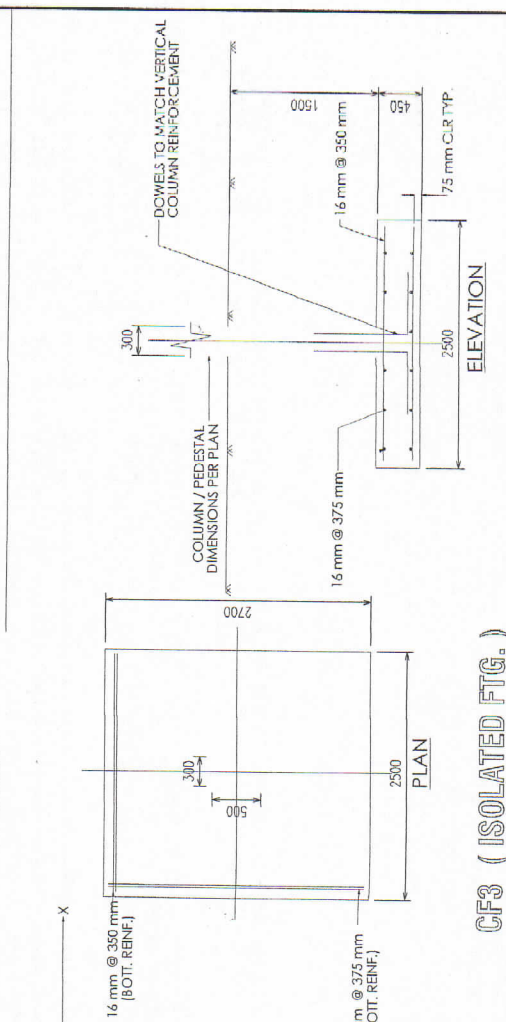
JEFF ARCHITECTURAL & ENGINEERING SERVICES REGISTERED ARCHITECTS AND ENGINEERS 1000 W. 10th Street, Suite 100, Grand Rapids, MI 49503 TEL: (616) 941-1111 FAX: (616) 941-1112 WWW.JEFFARCHITECTURAL.COM	ARCHITECTS: JUVY F. FADEROGAYA REG. NO. 890180 DATE: 01-30-14 TAX IDEN. NO.: 85-29-257	ENGINEER: JASON F. FALCOUT REG. NO. 828940 DATE: 12-2-18 TAX IDEN. NO.:	PROJECT TITLE: CONSTRUCTION OF 2-STORY ACADEMIC BUILDING (PHASE I) LOCATION: 1000 W. 10th Street, Grand Rapids, MI 49503	CHECKED BY: JEROME J. FALCOUT DIRECTOR	APPROVED BY: ARYULF DE LUINA PRESIDENT	SHEET NO. S-9 S-13
	ROMBLON STATE UNIVERSITY OFFICE OF UNIVERSITY PLANNING SERVICES AND PLANNING CONTROL UNIT			SHEET CONTENTS: DET. OF STAIR ON GRADE TYP. COLUMN ELEVATION TYP. GIRDER/BEAM ELEVATION R.C. COLUMN/PEDESTAL BEAM SCHEDULE		




CF2 (ISOLATED FTG.)






CF1 (COMBINED FTG)



CF3 (ISOLATED FTG.)

	JEFF ARCHITECTURAL & ENGINEERING SERVICES <small>REGISTERED ARCHITECTS, ENGINEERS, INTERIORS DESIGNERS, ENVIRONMENTAL ENGINEERS, PLANNERS, AND PROJECT MANAGERS</small> <small>1000 N. W. 10TH AVENUE, SUITE 1000, MIAMI, FL 33136</small> <small>TEL: (305) 576-1111 FAX: (305) 576-1112</small>	JEFF ARCHITECTURAL & ENGINEERING SERVICES <small>REGISTERED ARCHITECTS, ENGINEERS, INTERIORS DESIGNERS, ENVIRONMENTAL ENGINEERS, PLANNERS, AND PROJECT MANAGERS</small> <small>1000 N. W. 10TH AVENUE, SUITE 1000, MIAMI, FL 33136</small> <small>TEL: (305) 576-1111 FAX: (305) 576-1112</small>	PROJECT TITLE: PROPOSED 2-STORY ACADEMIC BUILDING	PROJECT NO.: 8029440	PROPOSED: 8029440	PROPOSED: 8029440	PROPOSED: 8029440	PROPOSED: 8029440	PROPOSED: 8029440	PROPOSED: 8029440
	ARCHITECT'S LICENSE: JEFF ARCHITECTURAL & ENGINEERING SERVICES ARCHITECTS, ENGINEERS, INTERIORS DESIGNERS, ENVIRONMENTAL ENGINEERS, PLANNERS, AND PROJECT MANAGERS DATE: 01-20-16 PLACE: OGDEN, UT TX: 152-1B PLACE: OGDEN, UT TX: 152-1B PLACE: OGDEN, UT	ENGINEER'S LICENSE: JEFF ARCHITECTURAL & ENGINEERING SERVICES ARCHITECTS, ENGINEERS, INTERIORS DESIGNERS, ENVIRONMENTAL ENGINEERS, PLANNERS, AND PROJECT MANAGERS DATE: 01-20-16 PLACE: OGDEN, UT TX: 152-1B PLACE: OGDEN, UT TX: 152-1B PLACE: OGDEN, UT	PROJECT TITLE: PROPOSED 2-STORY ACADEMIC BUILDING	PROJECT NO.: 8029440	PROPOSED: 8029440	PROPOSED: 8029440	PROPOSED: 8029440	PROPOSED: 8029440	PROPOSED: 8029440	PROPOSED: 8029440
ARCHITECT'S LICENSE: JEFF ARCHITECTURAL & ENGINEERING SERVICES ARCHITECTS, ENGINEERS, INTERIORS DESIGNERS, ENVIRONMENTAL ENGINEERS, PLANNERS, AND PROJECT MANAGERS DATE: 01-20-16 PLACE: OGDEN, UT TX: 152-1B PLACE: OGDEN, UT TX: 152-1B PLACE: OGDEN, UT	ENGINEER'S LICENSE: JEFF ARCHITECTURAL & ENGINEERING SERVICES ARCHITECTS, ENGINEERS, INTERIORS DESIGNERS, ENVIRONMENTAL ENGINEERS, PLANNERS, AND PROJECT MANAGERS DATE: 01-20-16 PLACE: OGDEN, UT TX: 152-1B PLACE: OGDEN, UT TX: 152-1B PLACE: OGDEN, UT	PROJECT TITLE: PROPOSED 2-STORY ACADEMIC BUILDING	PROJECT NO.: 8029440	PROPOSED: 8029440	PROPOSED: 8029440	PROPOSED: 8029440	PROPOSED: 8029440	PROPOSED: 8029440	PROPOSED: 8029440	PROPOSED: 8029440
ARCHITECT'S LICENSE: JEFF ARCHITECTURAL & ENGINEERING SERVICES ARCHITECTS, ENGINEERS, INTERIORS DESIGNERS, ENVIRONMENTAL ENGINEERS, PLANNERS, AND PROJECT MANAGERS DATE: 01-20-16 PLACE: OGDEN, UT TX: 152-1B PLACE: OGDEN, UT TX: 152-1B PLACE: OGDEN, UT	ENGINEER'S LICENSE: JEFF ARCHITECTURAL & ENGINEERING SERVICES ARCHITECTS, ENGINEERS, INTERIORS DESIGNERS, ENVIRONMENTAL ENGINEERS, PLANNERS, AND PROJECT MANAGERS DATE: 01-20-16 PLACE: OGDEN, UT TX: 152-1B PLACE: OGDEN, UT TX: 152-1B PLACE: OGDEN, UT	PROJECT TITLE: PROPOSED 2-STORY ACADEMIC BUILDING	PROJECT NO.: 8029440	PROPOSED: 8029440	PROPOSED: 8029440	PROPOSED: 8029440	PROPOSED: 8029440	PROPOSED: 8029440	PROPOSED: 8029440	PROPOSED: 8029440

APPROVED BY:  JEROME ADOLFO F. FAJARITO P.E. - DIRECTOR	CHECKED BY:  JEROME ADOLFO F. FAJARITO P.E. - DIRECTOR	APPROVED BY:  ANSELMO DE LUNA P.E. - PRESIDENT	SHEET NO.: S-10 S-13
--	---	---	--

ROMBLON STATE UNIVERSITY OFFICE OF AUXILIARY PLANT SERVICES AND POLLUTION CONTROL UNIT	TYP. DET. OF COLUMN FOOTING
--	------------------------------------