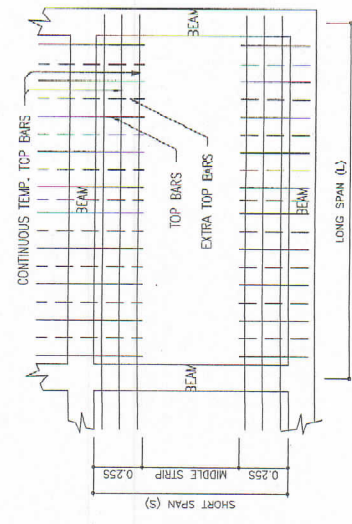


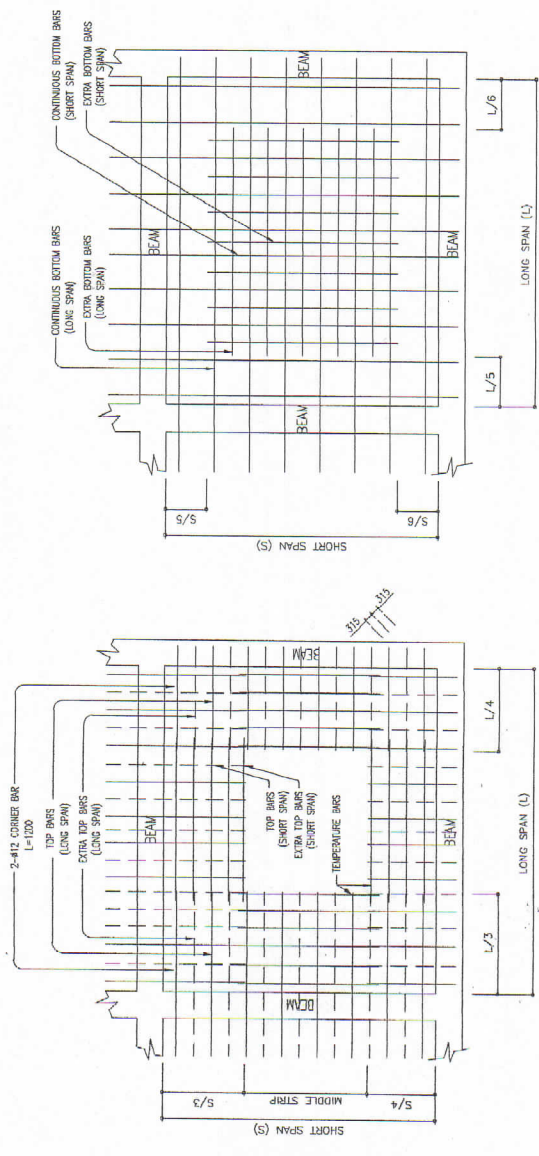
TYPICAL SLAB ELEVATION



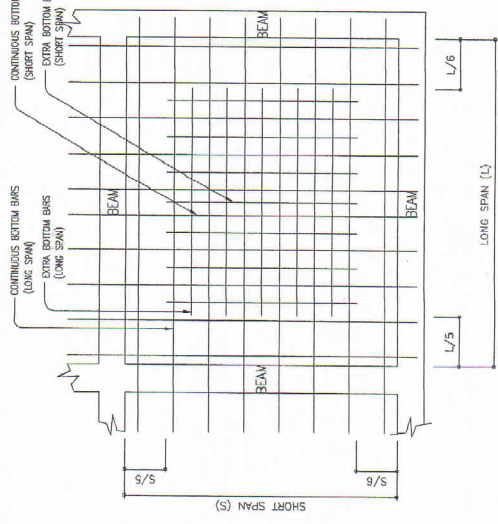
TYPICAL PLAN OF ONE WAY SLABS
(TOP BAR REINFORCEMENT)



TYPICAL PLAN OF ONE WAY SLABS
(BOTTOM BAR REINFORCEMENT)



TYPICAL PLAN OF TWO WAY SLABS
(TOP BAR REINFORCEMENT)



TYPICAL PLAN OF TWO WAY SLABS
(BOTTOM BAR REINFORCEMENT)

R. C. SLAB SCHEDULE

MARK	THICKNESS (mm)	REINFORCEMENT				REMARKS
		SHORT SPAN		LONG SPAN		
		TOP BARS	BOTTOM BARS	TOP BARS	BOTTOM BARS	
S-1	125	CONTINUOUS #10 @ 150	EXTRA (ALTERNATELY) #10 @ 300	CONTINUOUS EDGE #10 @ 150	EXTRA (ALTERNATELY) #10 @ 300	TEMP. BARS #10 @ 300
S-2	125	ONE WAY #10 @ 200	#10 @ 100	-	-	#10 @ 200

JEFF ARCHITECTURAL & ENGINEERING SERVICES
MEMBER OF THE ARCHITECTURAL AND ENGINEERING PROFESSIONAL BOARD OF THE PHILIPPINES
 REGISTERED ARCHITECTS AND ENGINEERS
 OFFICE: 1101, 1102, 1103, 1104, 1105, 1106, 1107, 1108, 1109, 1110, 1111, 1112, 1113, 1114, 1115, 1116, 1117, 1118, 1119, 1120, 1121, 1122, 1123, 1124, 1125, 1126, 1127, 1128, 1129, 1130, 1131, 1132, 1133, 1134, 1135, 1136, 1137, 1138, 1139, 1140, 1141, 1142, 1143, 1144, 1145, 1146, 1147, 1148, 1149, 1150, 1151, 1152, 1153, 1154, 1155, 1156, 1157, 1158, 1159, 1160, 1161, 1162, 1163, 1164, 1165, 1166, 1167, 1168, 1169, 1170, 1171, 1172, 1173, 1174, 1175, 1176, 1177, 1178, 1179, 1180, 1181, 1182, 1183, 1184, 1185, 1186, 1187, 1188, 1189, 1190, 1191, 1192, 1193, 1194, 1195, 1196, 1197, 1198, 1199, 1200

PROJECT TITLE: PROPOSED 3-STORY ACADEMIC BUILDING
 LOCATION: CORBIN SITE (MAGSAY-SANON) (MAYAPALAN/DAVAO REGION)
 ENGINEER'S LICENSE: JUVY F. FADRENGAYA
 REGISTERED PROFESSIONAL ENGINEER (CIVIL)
 REG. NO.: 0013421 | P.I.R. NO.: 8390180 | P.R. NO.: 014024 | P.L.R. NO.: 802740
 DATE: 01-20-16 | PLACE: CDO/COLEGAN | TIME: 11:25:18 | PAGE: 00/00/00
 TEL. NO.: 181-479-2527 | FAX NO.: -

APPROVED BY:  JEROME ADRIANO F. FALARITO
REGISTERED PROFESSIONAL ENGINEER (CIVIL)

CHECKED BY:  JEROME ADRIANO F. FALARITO
REGISTERED PROFESSIONAL ENGINEER (CIVIL)

REINFORCEMENT STATE UNIVERSITY
OFFICE OF REINFORCEMENT SERVICES AND
 EVALUATION CONTROL UNIT

APPROVED BY:  JEROME ADRIANO F. FALARITO
REGISTERED PROFESSIONAL ENGINEER (CIVIL)

SHEET NO. S-11
TYP. DETAIL OF CONC. SLAB

